

COMPONENTS FOR CONVEYORS

# magris



MAKES MOVING

**CONSTRUKTOR**<sup>TM</sup>

[www.construktor.com](http://www.construktor.com)

ZAKRĘTY MAGNETYCZNE I PROWADNICE





La curva magnetica è la soluzione ottimale per i percorsi curvilinei. Le catene sono trattenute in curva da magneti integrati garantendo superfici di appoggio perfettamente piane e la conseguente ottima stabilità dei prodotti trasportati. La struttura della curva consiste in una parte superiore corredata di magneti e di una parte inferiore separata per il rinvio assemblate insieme. La presenza del pattino di ritorno assicura alla catena la guida senza inciampi nel percorso di ritorno.

Le catene magnetiche risultano estremamente piatte dal momento che non necessitano di guide Tab.

La pulizia della curva è semplicissima ed attuabile semplicemente sollevando la catena. La superficie della curva è chiusa e senza rugosità, così da evitare accumuli di detriti e residui.

Con questo sistema, si ha un aumento della resistenza all'usura delle catene grazie alla maggiore superficie di appoggio in curva e alla manutenzione più semplice e veloce.

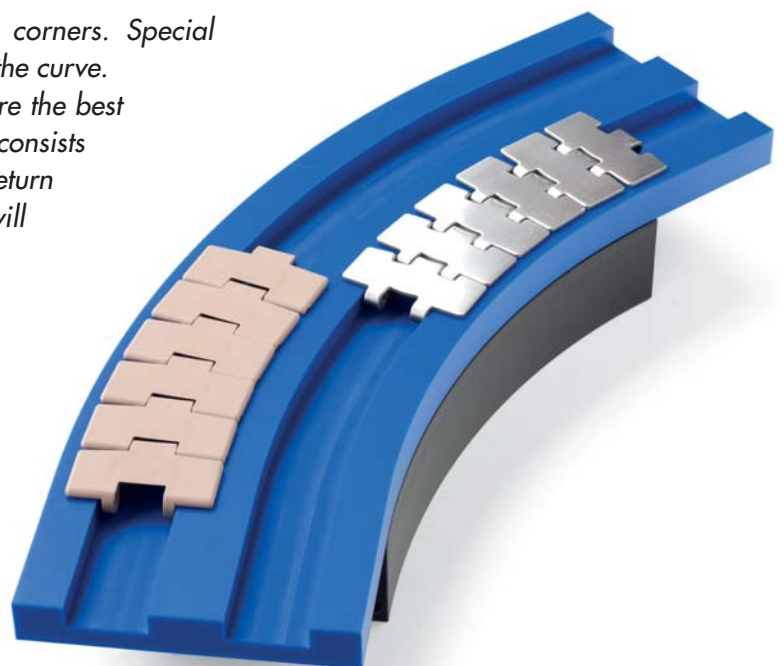
# magris

*Magnetic curve is the ideal solution for your corners. Special integrated permanent magnets keep the chain in the curve. This system offers a flat carrying surface, therefore the best product stability and support. The complete curve consists of an upper part with magnets and a separate return part mounted together. The return infeed shoe will ensure smooth guiding of the chains into the return section.*

*Magnetic chains are also flatter since they have no tabs guides.*

*Clearing the curve can be done easily by lifting the chain. The curve surface is closed and smooth to avoid dirt accumulation.*

*This system provides a longer wearlife, because the bearing surface of the chains on the curve is larger than in other systems, and maintenance is easier.*





# GUIDE CURVE PER SISTEMI MAGNETICI MAGNETIC CORNER TRACKS

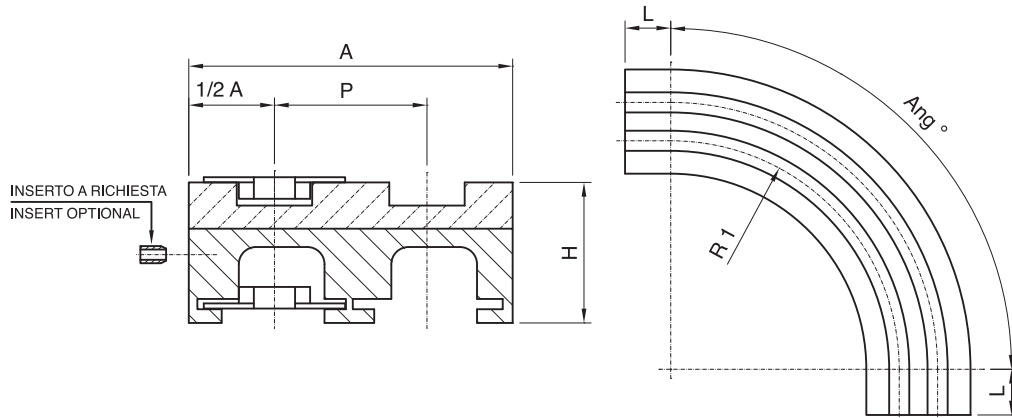
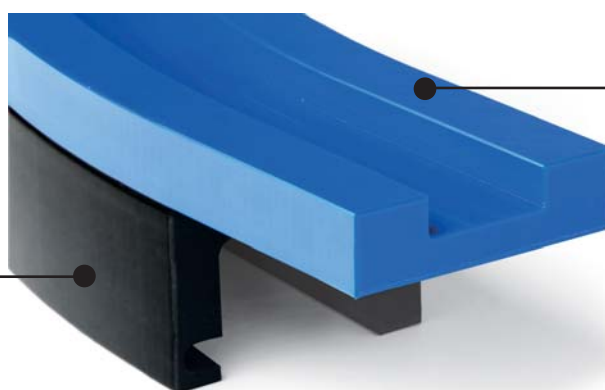


TABELLA DI SCELTA / SELECTION TABLES														
Catena / Chains			RAGGIO RADIUS R	PASSO PITCH P	LARGH. BASE BASIC WIDTH A	TRATTI RETT. INFEEED LENGTH L	H TOTALE TOTAL HEIGHT H	VERSIONE VERSION	PAGINA PAGE					
RIF. CATENE CHAINS REF.	SPESSORE THICKNESS	CERNIERA HINGE												
<b>PER CATENE LARGH. K325 - K330 / FOR CHAINS WITH K325 - K330 PLATE WIDTH</b>														
879 M K325 880 M K325 880 M K330 881 M K325 881 M K330 581 M K325	3 - 4	42,1	500	85	100	0	82 / 90	CM07	4					
					110	100	90	CM06	4					
					111	100	90	CM10	5					
				89	100	125	82	CM04	5					
					90	100		CM14	6					
					110	0		CM01	6					
			590 680 750 860 1000	-	100	85	100	100	82 / 90	CM02	7			
							111	100	90	CM03	7			
						90	110	125	82	CM05B	8			
							100	0		CM05A	8			
661 M K325 661 M K330 879 M K450 880 M K450 881 M K450	3 - 4	42,1	500	85	100	100	82	CM08	9					
					120	129	90	CM09	9					
					117	0	90	CM42	10					
				610	125	214	82	CM09	10					
					0			CM05C	10					
					100			CM05D	11					
			880 M K750 881 M K750	3 - 4	42,1	500	192	0	90	CM60	14			
								125	90	CM61	14			
							750	-	214	0	82	CM62	15	
												860	0	82
8817 M K750 8817 M G K750 882 M K750	3 - 4,8	42,1 56,6 57	610	195	200	100	95	CM65	16					
								750	-	214	0	87 / 95	CM81	16
													860	0
			1000	195	200	100	87 / 95	CM86	17					
								100	100	87 / 95	CM80	18		
			<b>PER CATENE LARGH. K750 / FOR CHAINS WITH K750 PLATE WIDTH</b>											
<b>PER CATENE LARGH. K1000 / FOR CHAINS WITH K1000 PLATE WIDTH</b>														
882 M K1000	4,8	56,6	860	-	290	0	87	CM91	18					
					270		95	CM93	19					
<b>PER CATENE LARGH. K1200 / FOR CHAINS WITH K1200 PLATE WIDTH</b>														
882 M K1200	4,8	56,6	860	-	340	0	87	CM94	19					
					320		95	CM96	20					
<b>PER CATENE LARGH. K1200 / FOR CHAINS WITH K1200 PLATE WIDTH</b>														
882 M K1200	4,8	56,6	860	-	340	0	87	CM97	20					
					320		95	CM98	21					



TABELLA DI SCELTA / SELECTION TABLES											
Catena / Chains			RAGGIO RADIUS R	PASSO PITCH P	LARGH. BASE BASIC WIDTH A	TRATTI RETT. INFEED LENGTH L	H TOTALE TOTAL HEIGHT H	VERSIONE VERSION	PAGINA PAGE		
RIF. CATENE CHAINS REF	SPESSORE THICKNESS	CERNIERA HINGE									
<b>PER CATENE LBP / FOR LBP CHAINS SERIES</b>											
LBP879 M K325	4,8	56,6	500	85	100	0	82 / 102	CMP68C	21		
LBP 882 M K325				90		100		90	CMP02	22	
LBP 882 M K750			860	-	200	214	0	95	CMP861	22	
LBP 882 M K1000				270					CMP86C	23	
				290					CMP93C	23	
				270					CMP91	24	
				1000					CMP94C	24	
LBP 882 M K1200				860					320	CMP97C	25
			1000	340	CMP96	25					
<b>PER CATENE 780M - 790M / FOR 780M - 790M CHAINS SERIES</b>											
780 M K330	8,7	42,1	500	85	100	100	90	CMB06	26		
						0		82 / 90	CMB07	27	
						111		100	CMB04	27	
780 M K450			500	610	117	129	100	90	CMB08	28	
									0	CMB05D	28
									100	CMB22	29
790 M K330	12,7	42,1	500	85	100	90	CMB27	29			
							0	CMC06	30		
							82 / 90	CMC07	30		
							111	100	CMC04	31	
790 M K450			500	610	120	117	129	100	CMC08	31	
									0	CMC05D	32
									125	CMC21	32
									100	CMC22	33
								CMC27	33		
								PATTINI DI RITORNO: INSTALLAZIONE / RETURN GUIDE SHOES: INSTALLATION	34		
								NOTES	35		
								CREDITS	36		



### Curva di Ritorno

Materiale:  
PE-UHMW Nero c.ca 4 milioni  
gr/mol con alta resistenza all'usura.

### Return Part

Material:  
PE-UHMW Black about 4 million  
gr/mol for high wear resistance.

### Curva di Andata

Materiale:  
PE-UHMW Blu vergine 8 milioni gr/mol  
Materiale speciale con alta resistenza  
all'usura, studiato per applicazioni  
gravose.

### Upper Part

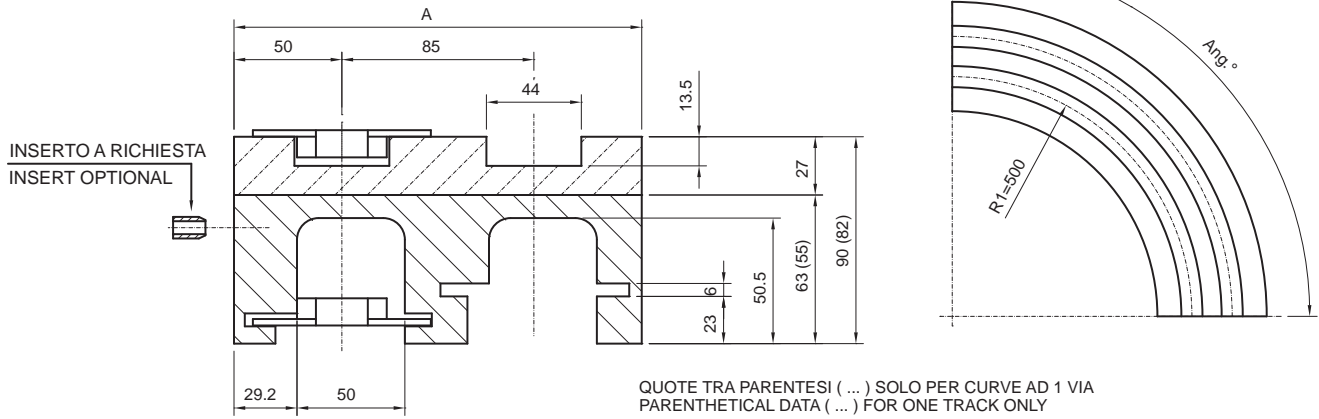
Material:  
PE-UHMW Blue 8 million gr/mol, virgin.  
Special material studied for high wear  
resistance applications.

\*\* Con le catene in acciaio inossidabile le curve magnetiche Magris sono utilizzabili in tutto il mondo senza restrizioni.  
*Worldwide no restrictions for Magris magnetic curves used with stainless steel chains.*

\*\* Con le catene in resina termoplastica le curve magnetiche Magris sono soggette a restrizioni in alcune nazioni. Vi preghiamo di contattare il nostro servizio clienti per maggiori dettagli.  
*Some restrictions in specific countries for Magris magnetic curves used with thermoplastic chains. Please contact our Customer Service for more details.*



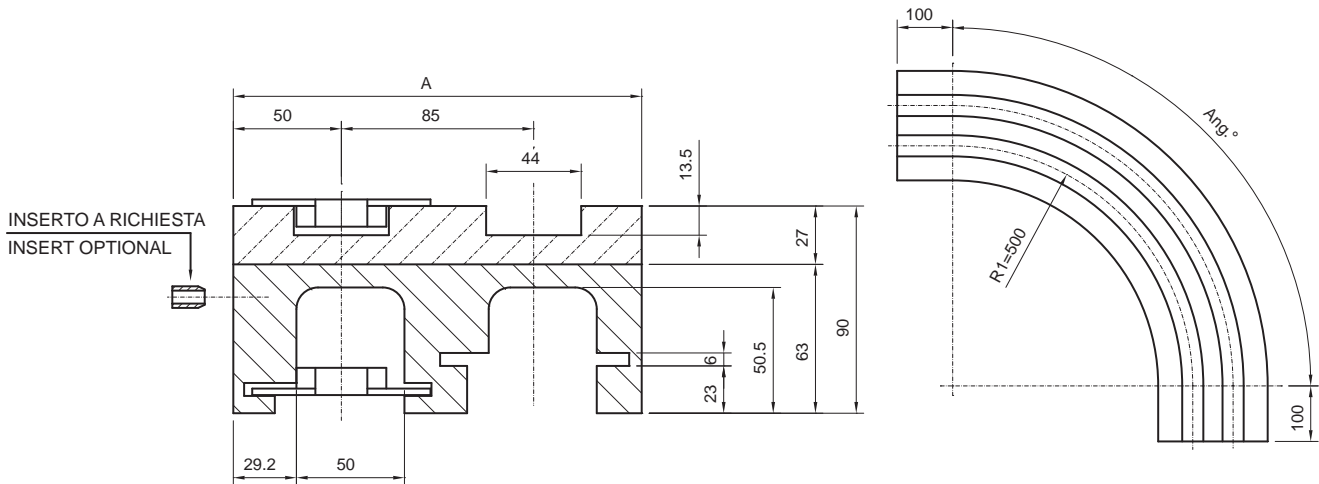
# GUIDE CURVE PER SISTEMI MAGNETICI MAGNETIC CORNER TRACKS



VERSIONE CM07 / VERSION CM07							
N° VIE Nr. of TRACKS	A	Angolo curva / Curve angle					
		15°	30°	45°	60°	75°	90°
1	100	CM07 01 15	CM07 01 30	CM07 01 45	CM07 01 60	CM07 01 75	CM07 01 90
2	185	CM07 02 15	CM07 02 30	CM07 02 45	CM07 02 60	CM07 02 75	CM07 02 90
3	270	CM07 03 15	CM07 03 30	CM07 03 45	CM07 03 60	CM07 03 75	CM07 03 90
4	355	CM07 04 15	CM07 04 30	CM07 04 45	CM07 04 60	CM07 04 75	CM07 04 90
5	440	CM07 05 15	CM07 05 30	CM07 05 45	CM07 05 60	CM07 05 75	CM07 05 90
6	525	CM07 06 15	CM07 06 30	CM07 06 45	CM07 06 60	CM07 06 75	CM07 06 90
7	610	CM07 07 15	CM07 07 30	CM07 07 45	CM07 07 60	CM07 07 75	CM07 07 90

Rif. Catena Chains ref.
879 M K325
880 M K325
880 M K330
881 M K325
881 M K330
581 M K325

N° di vie superiori a richiesta - More than 7 tracks on request

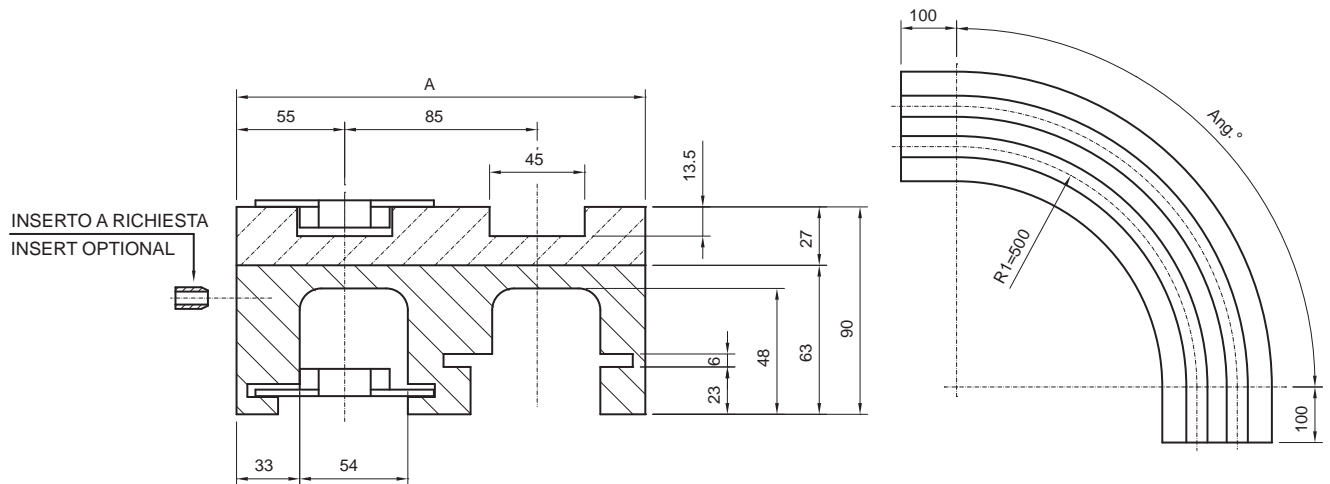


VERSIONE CM06 / VERSION CM06							
N° VIE Nr. of TRACKS	A	Angolo curva / Curve angle					
		15°	30°	45°	60°	75°	90°
1	100	CM06 01 15	CM06 01 30	CM06 01 45	CM06 01 60	CM06 01 75	CM06 01 90
2	185	CM06 02 15	CM06 02 30	CM06 02 45	CM06 02 60	CM06 02 75	CM06 02 90
3	270	CM06 03 15	CM06 03 30	CM06 03 45	CM06 03 60	CM06 03 75	CM06 03 90
4	355	CM06 04 15	CM06 04 30	CM06 04 45	CM06 04 60	CM06 04 75	CM06 04 90
5	440	CM06 05 15	CM06 05 30	CM06 05 45	CM06 05 60	CM06 05 75	CM06 05 90
6	525	CM06 06 15	CM06 06 30	CM06 06 45	CM06 06 60	CM06 06 75	CM06 06 90
7	610	CM06 07 15	CM06 07 30	CM06 07 45	CM06 07 60	CM06 07 75	CM06 07 90

Rif. Catena Chains ref.
879 M K325
880 M K325
880 M K330
881 M K325
881 M K330
581 M K325

N° di vie superiori a richiesta - More than 7 tracks on request

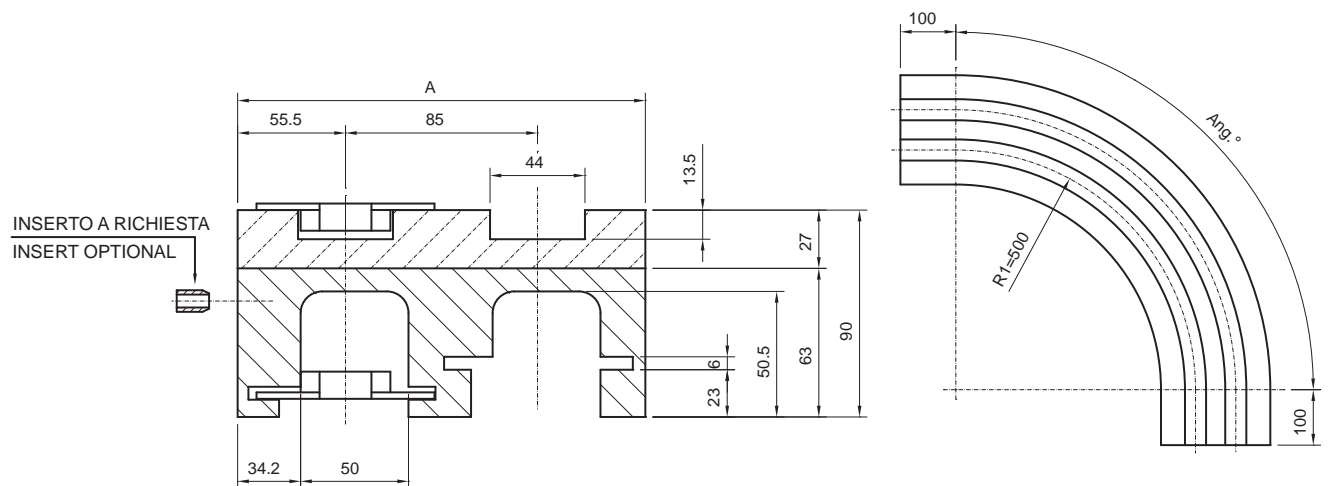
# GUIDE CURVE PER SISTEMI MAGNETICI MAGNETIC CORNER TRACKS



Rif. Catena Chains ref.
879 M K325
880 M K325
880 M K330
881 M K325
881 M K330
581 M K325

VERSIONE CM10 / VERSION CM10							
N° VIE Nr. of TRACKS	A	Angolo curva / Curve angle					
		15°	30°	45°	60°	75°	90°
1	110	CM10 01 15	CM10 01 30	CM10 01 45	CM10 01 60	CM10 01 75	CM10 01 90
2	195	CM10 02 15	CM10 02 30	CM10 02 45	CM10 02 60	CM10 02 75	CM10 02 90
3	280	CM10 03 15	CM10 03 30	CM10 03 45	CM10 03 60	CM10 03 75	CM10 03 90
4	365	CM10 04 15	CM10 04 30	CM10 04 45	CM10 04 60	CM10 04 75	CM10 04 90
5	450	CM10 05 15	CM10 05 30	CM10 05 45	CM10 05 60	CM10 05 75	CM10 05 90
6	535	CM10 06 15	CM10 06 30	CM10 06 45	CM10 06 60	CM10 06 75	CM10 06 90
7	620	CM10 07 15	CM10 07 30	CM10 07 45	CM10 07 60	CM10 07 75	CM10 07 90
8	705	CM10 08 15	CM10 08 30	CM10 08 45	CM10 08 60	CM10 08 75	CM10 08 90

N° di vie superiori a richiesta - More than 8 tracks on request



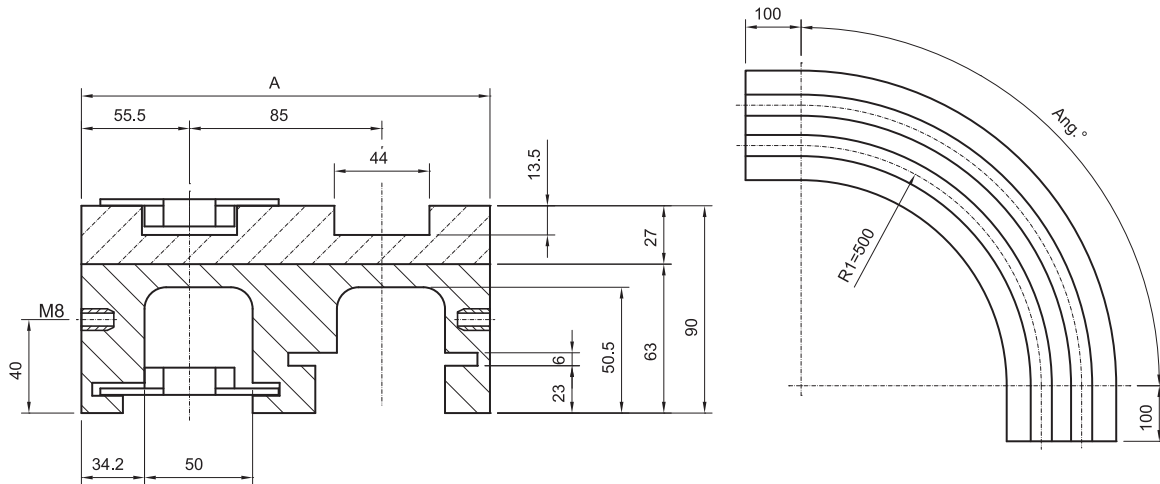
Rif. Catena Chains ref.
879 M K325
880 M K325
880 M K330
881 M K325
881 M K330
581 M K325

VERSIONE CM04 / VERSION CM04							
N° VIE Nr. of TRACKS	A	Angolo curva / Curve angle					
		15°	30°	45°	60°	75°	90°
1	111	CM04 01 15	CM04 01 30	CM04 01 45	CM04 01 60	CM04 01 75	CM04 01 90
2	196	CM04 02 15	CM04 02 30	CM04 02 45	CM04 02 60	CM04 02 75	CM04 02 90
3	281	CM04 03 15	CM04 03 30	CM04 03 45	CM04 03 60	CM04 03 75	CM04 03 90
4	366	CM04 04 15	CM04 04 30	CM04 04 45	CM04 04 60	CM04 04 75	CM04 04 90
5	451	CM04 05 15	CM04 05 30	CM04 05 45	CM04 05 60	CM04 05 75	CM04 05 90
6	536	CM04 06 15	CM04 06 30	CM04 06 45	CM04 06 60	CM04 06 75	CM04 06 90
7	621	CM04 07 15	CM04 07 30	CM04 07 45	CM04 07 60	CM04 07 75	CM04 07 90

N° di vie superiori a richiesta - More than 7 tracks on request



# GUIDE CURVE PER SISTEMI MAGNETICI MAGNETIC CORNER TRACKS

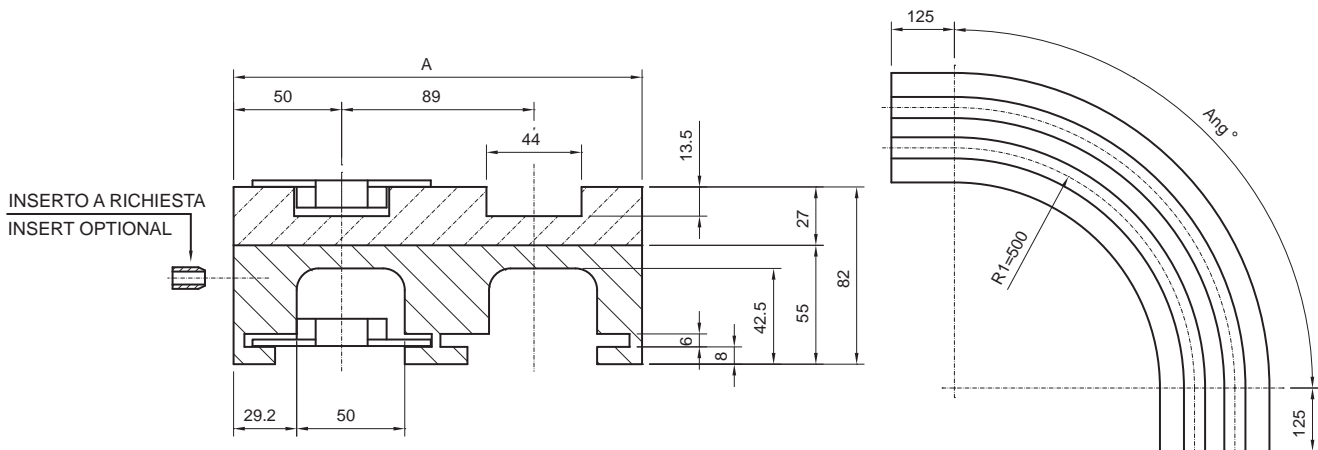


VERSIONE CM14 / VERSION CM14							
N° VIE Nr. of TRACKS	A	Angolo curva / Curve angle					
		15°	30°	45°	60°	75°	90°
1	111	CM14 01 15	CM14 01 30	CM14 01 45	CM14 01 60	CM14 01 75	CM14 01 90
2	196	CM14 02 15	CM14 02 30	CM14 02 45	CM14 02 60	CM14 02 75	CM14 02 90
3	281	CM14 03 15	CM14 03 30	CM14 03 45	CM14 03 60	CM14 03 75	CM14 03 90
4	366	CM14 04 15	CM14 04 30	CM14 04 45	CM14 04 60	CM14 04 75	CM14 04 90
5	451	CM14 05 15	CM14 05 30	CM14 05 45	CM14 05 60	CM14 05 75	CM14 05 90
6	536	CM14 06 15	CM14 06 30	CM14 06 45	CM14 06 60	CM14 06 75	CM14 06 90
7	621	CM14 07 15	CM14 07 30	CM14 07 45	CM14 07 60	CM14 07 75	CM14 07 90

Rif. Catena Chains ref.
879 M K325
880 M K325
880 M K330
881 M K325
881 M K330
581 M K325

N° di vie superiori a richiesta - More than 7 tracks on request

Include inserti in ottone il cui posizionamento varia a seconda dell'angolo di curvatura - Include inserts, of which the pattern varies per angle

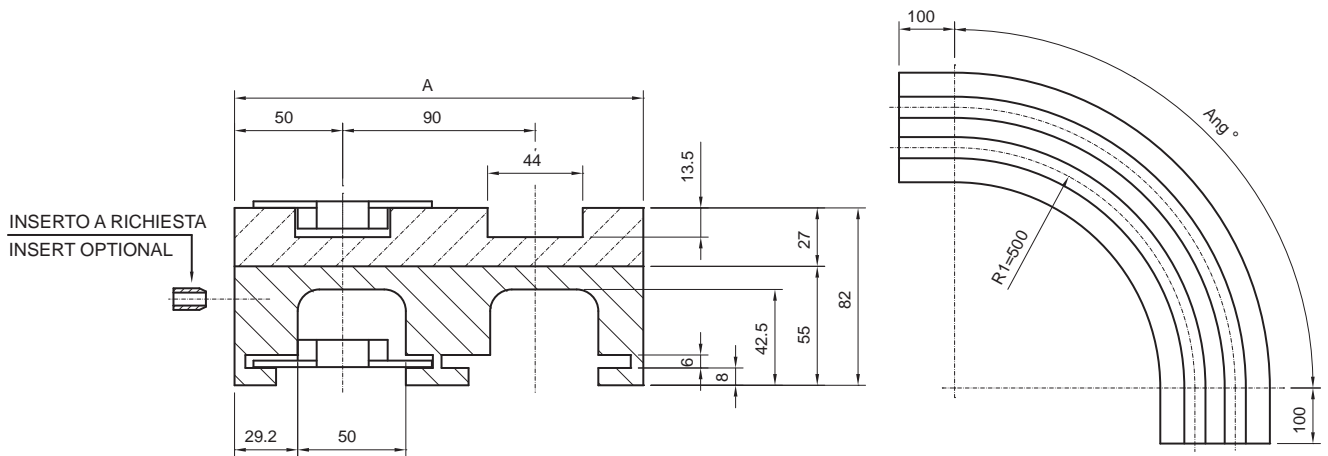


VERSIONE CM01 / VERSION CM01							
N° VIE Nr. of TRACKS	A	Angolo curva / Curve angle					
		15°	30°	45°	60°	75°	90°
1	100	CM01 01 15	CM01 01 30	CM01 01 45	CM01 01 60	CM01 01 75	CM01 01 90
2	189	CM01 02 15	CM01 02 30	CM01 02 45	CM01 02 60	CM01 02 75	CM01 02 90
3	278	CM01 03 15	CM01 03 30	CM01 03 45	CM01 03 60	CM01 03 75	CM01 03 90
4	367	CM01 04 15	CM01 04 30	CM01 04 45	CM01 04 60	CM01 04 75	CM01 04 90
5	456	CM01 05 15	CM01 05 30	CM01 05 45	CM01 05 60	CM01 05 75	CM01 05 90
6	545	CM01 06 15	CM01 06 30	CM01 06 45	CM01 06 60	CM01 06 75	CM01 06 90
7	634	CM01 07 15	CM01 07 30	CM01 07 45	CM01 07 60	CM01 07 75	CM01 07 90

Rif. Catena Chains ref.
879 M K325
880 M K325
880 M K330
881 M K325
881 M K330
581 M K325

N° di vie superiori a richiesta - More than 7 tracks on request

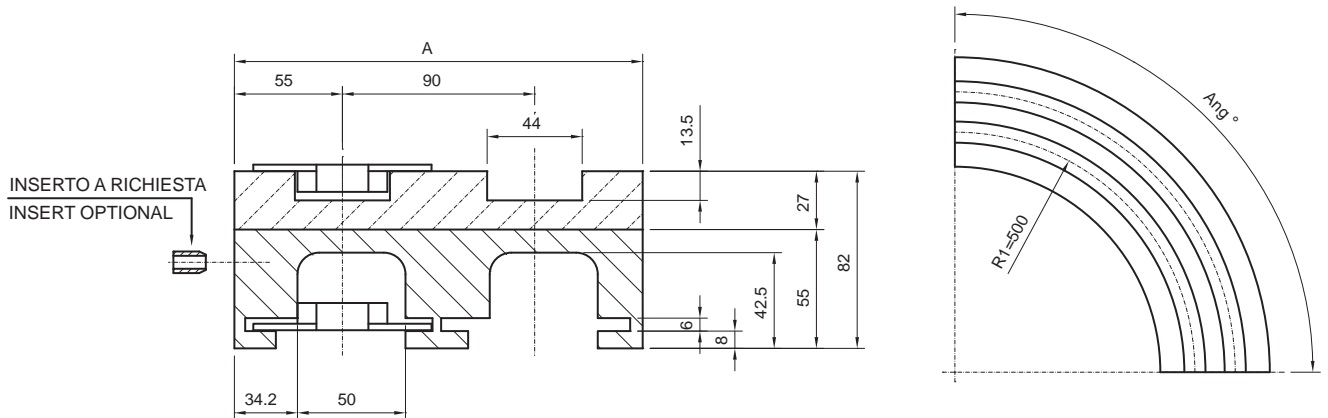
# GUIDE CURVE PER SISTEMI MAGNETICI MAGNETIC CORNER TRACKS



Rif. Catena Chains ref.
879 M K325
880 M K325
880 M K330
881 M K325
881 M K330
581 M K325

VERSIONE CM02 / VERSION CM02							
N° VIE Nr. of TRACKS	A	Angolo curva / Curve angle					
		15°	30°	45°	60°	75°	90°
1	100	CM02 01 15	CM02 01 30	CM02 01 45	CM02 01 60	CM02 01 75	CM02 01 90
2	190	CM02 02 15	CM02 02 30	CM02 02 45	CM02 02 60	CM02 02 75	CM02 02 90
3	280	CM02 03 15	CM02 03 30	CM02 03 45	CM02 03 60	CM02 03 75	CM02 03 90
4	370	CM02 04 15	CM02 04 30	CM02 04 45	CM02 04 60	CM02 04 75	CM02 04 90
5	460	CM02 05 15	CM02 05 30	CM02 05 45	CM02 05 60	CM02 05 75	CM02 05 90
6	550	CM02 06 15	CM02 06 30	CM02 06 45	CM02 06 60	CM02 06 75	CM02 06 90
7	640	CM02 07 15	CM02 07 30	CM02 07 45	CM02 07 60	CM02 07 75	CM02 07 90

N° di vie superiori a richiesta - More than 7 tracks on request



Rif. Catena Chains ref.
879 M K325
880 M K325
880 M K330
881 M K325
881 M K330
581 M K325

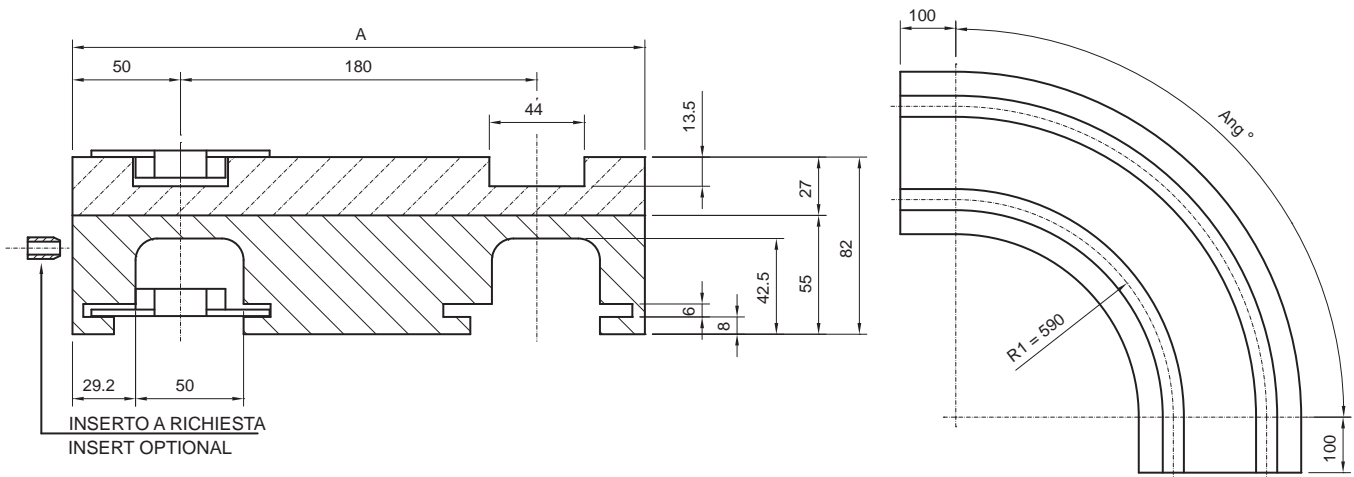
VERSIONE CM03 / VERSION CM03							
N° VIE Nr. of TRACKS	A	Angolo curva / Curve angle					
		15°	30°	45°	60°	75°	90°
1	110	CM03 01 15	CM03 01 30	CM03 01 45	CM03 01 60	CM03 01 75	CM03 01 90
2	200	CM03 02 15	CM03 02 30	CM03 02 45	CM03 02 60	CM03 02 75	CM03 02 90
3	290	CM03 03 15	CM03 03 30	CM03 03 45	CM03 03 60	CM03 03 75	CM03 03 90
4	380	CM03 04 15	CM03 04 30	CM03 04 45	CM03 04 60	CM03 04 75	CM03 04 90
5	470	CM03 05 15	CM03 05 30	CM03 05 45	CM03 05 60	CM03 05 75	CM03 05 90
6	560	CM03 06 15	CM03 06 30	CM03 06 45	CM03 06 60	CM03 06 75	CM03 06 90
7	650	CM03 07 15	CM03 07 30	CM03 07 45	CM03 07 60	CM03 07 75	CM03 07 90

N° di vie superiori a richiesta - More than 7 tracks on request





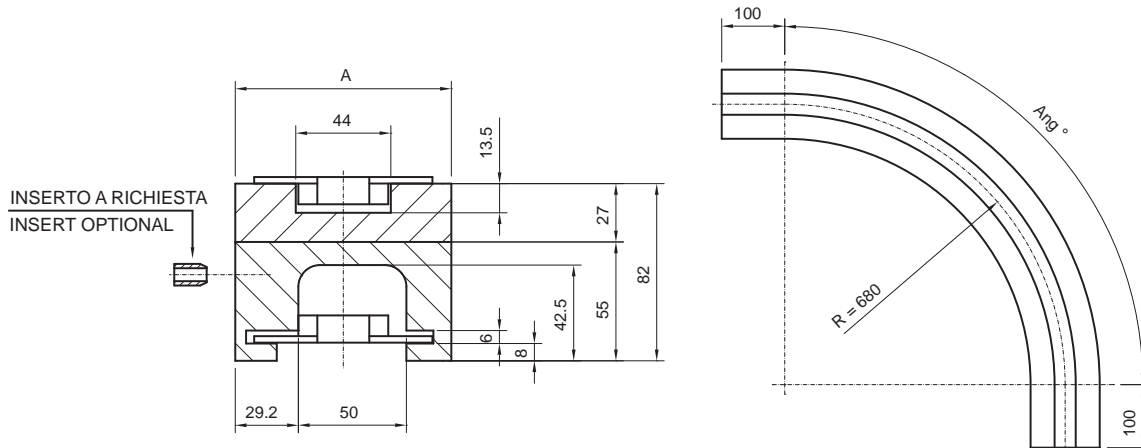
# GUIDE CURVE PER SISTEMI MAGNETICI MAGNETIC CORNER TRACKS



VERSIONE CM05B / VERSION CM05B							
N° VIE Nr. of TRACKS	A	Angolo curva / Curve angle					
		15°	30°	45°	60°	75°	90°
2	280	CM05B 02 15	CM05B 02 30	CM05B 02 45	CM05B 02 60	CM05B 02 75	CM05B 02 90

Rif. Catena Chains ref.
879 M K325
880 M K325
880 M K330
881 M K325
881 M K330
581 M K325

Curva speciale a due vie per il trasporto casse - *Special twin-track design for crate conveyors*

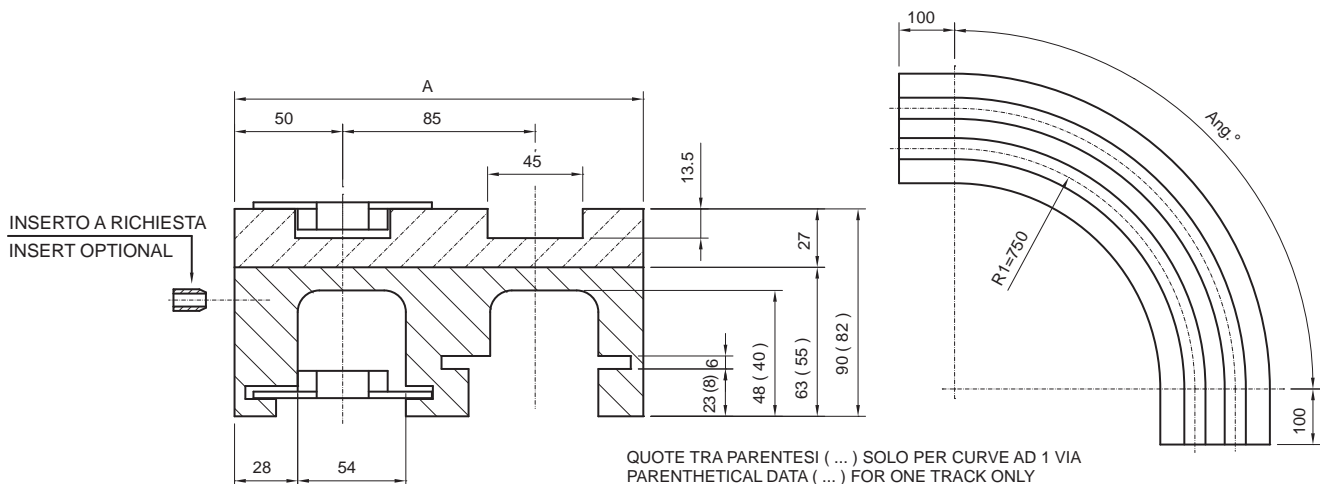


VERSIONE CM05A / VERSION CM05A							
N° VIE Nr. of TRACKS	A	Angolo curva / Curve angle					
		15°	30°	45°	60°	75°	90°
1	100	CM05A 01 15	CM05A 01 30	CM05A 01 45	CM05A 01 60	CM05A 01 75	CM05A 01 90

Rif. Catena Chains ref.
879 M K325
880 M K325
880 M K330
881 M K325
881 M K330
581 M K325

N° di vie superiori a richiesta - *More than 1 track on request*

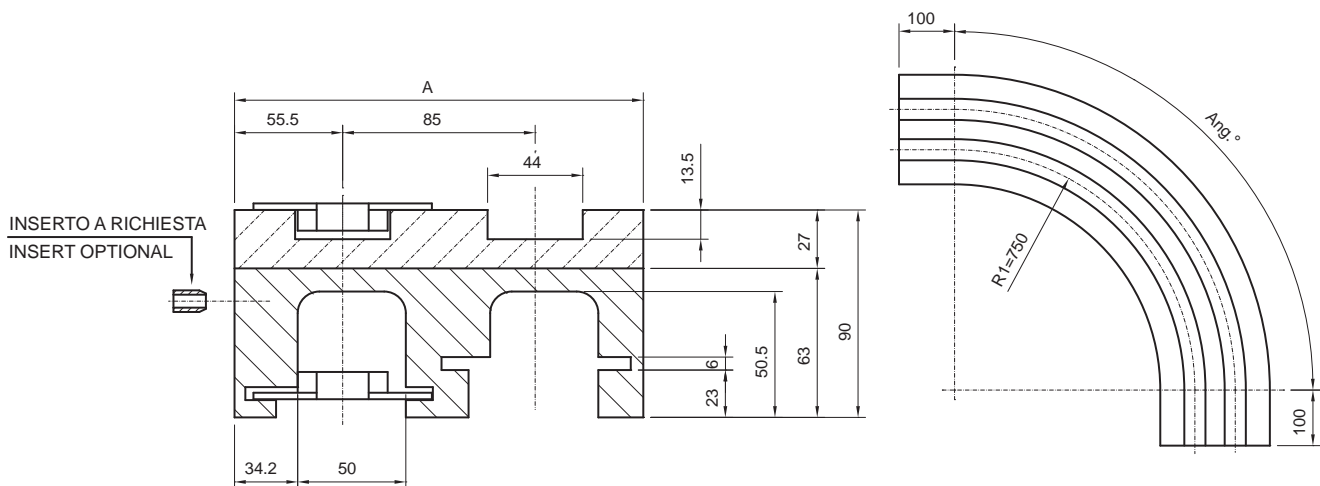
# GUIDE CURVE PER SISTEMI MAGNETICI MAGNETIC CORNER TRACKS



Rif. Catena Chains ref.
879 M K325
880 M K325
880 M K330
881 M K325
881 M K330
581 M K325

VERSIONE CM08 / VERSION CM08							
N° VIE Nr. of TRACKS	A	Angolo curva / Curve angle					
		15°	30°	45°	60°	75°	90°
1	100	CM08 01 15	CM08 01 30	CM08 01 45	CM08 01 60	CM08 01 75	CM08 01 90
2	185	CM08 02 15	CM08 02 30	CM08 02 45	CM08 02 60	CM08 02 75	CM08 02 90
3	270	CM08 03 15	CM08 03 30	CM08 03 45	CM08 03 60	CM08 03 75	CM08 03 90
4	355	CM08 04 15	CM08 04 30	CM08 04 45	CM08 04 60	CM08 04 75	CM08 04 90
5	440	CM08 05 15	CM08 05 30	CM08 05 45	CM08 05 60	CM08 05 75	CM08 05 90
6	525	CM08 06 15	CM08 06 30	CM08 06 45	CM08 06 60	CM08 06 75	CM08 06 90
7	610	CM08 07 15	CM08 07 30	CM08 07 45	CM08 07 60	CM08 07 75	CM08 07 90
8	695	CM08 08 15	CM08 08 30	CM08 08 45	CM08 08 60	CM08 08 75	CM08 08 90

N° di vie superiori a richiesta - More than 8 tracks on request



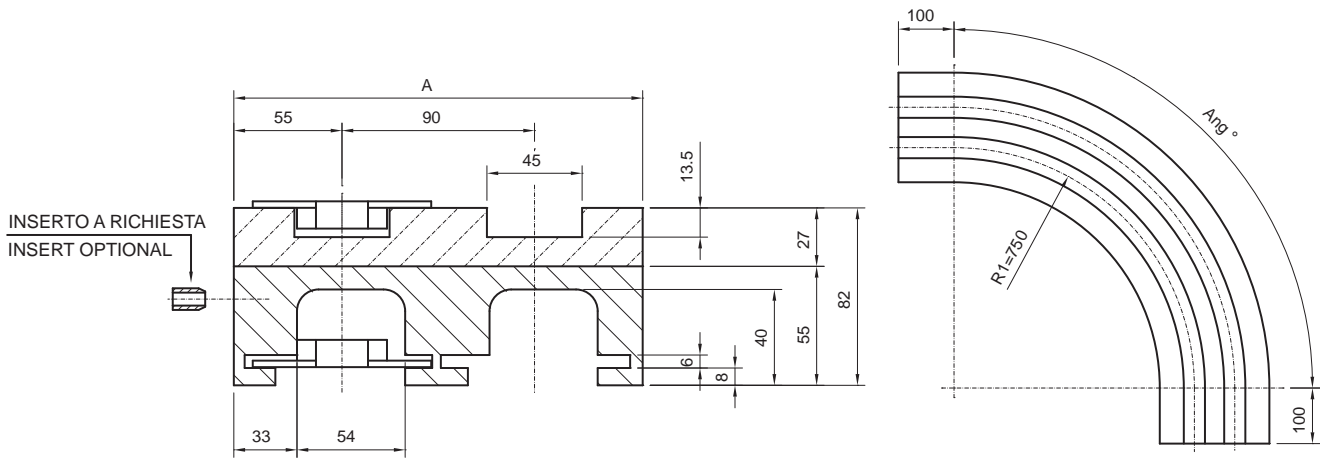
Rif. Catena Chains ref.
879 M K325
880 M K325
880 M K330
881 M K325
881 M K330
581 M K325

VERSIONE CM42 / VERSION CM42							
N° VIE Nr. of TRACKS	A	Angolo curva / Curve angle					
		15°	30°	45°	60°	75°	90°
1	111	CM42 01 15	CM42 01 30	CM42 01 45	CM42 01 60	CM42 01 75	CM42 01 90
2	196	CM42 02 15	CM42 02 30	CM42 02 45	CM42 02 60	CM42 02 75	CM42 02 90
3	281	CM42 03 15	CM42 03 30	CM42 03 45	CM42 03 60	CM42 03 75	CM42 03 90
4	366	CM42 04 15	CM42 04 30	CM42 04 45	CM42 04 60	CM42 04 75	CM42 04 90
5	451	CM42 05 15	CM42 05 30	CM42 05 45	CM42 05 60	CM42 05 75	CM42 05 90
6	536	CM42 06 15	CM42 06 30	CM42 06 45	CM42 06 60	CM42 06 75	CM42 06 90
7	621	CM42 07 15	CM42 07 30	CM42 07 45	CM42 07 60	CM42 07 75	CM42 07 90

N° di vie superiori a richiesta - More than 7 tracks on request



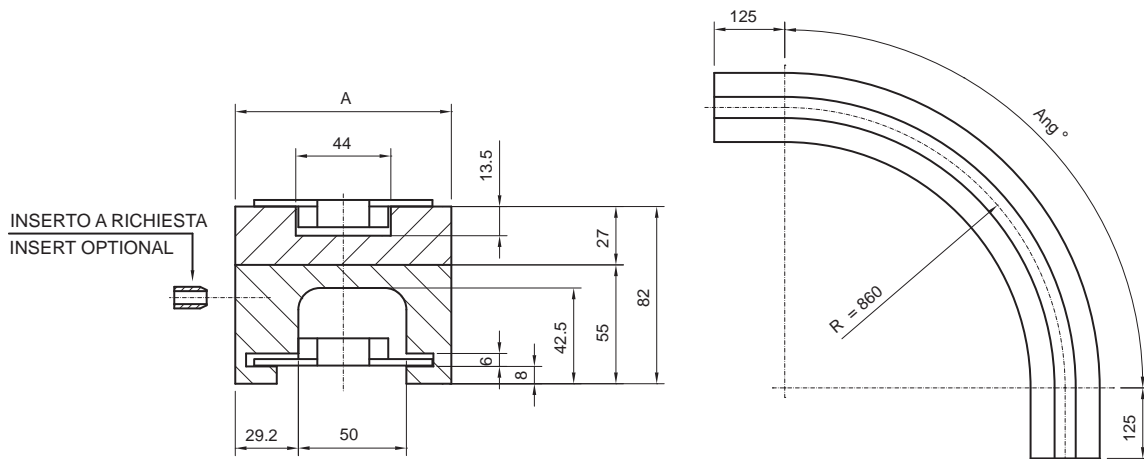
# GUIDE CURVE PER SISTEMI MAGNETICI MAGNETIC CORNER TRACKS



VERSIONE CM09 / VERSION CM09							
N° VIE Nr. of TRACKS	A	Angolo curva / Curve angle					
		15°	30°	45°	60°	75°	90°
1	110	CM09 01 15	CM09 01 30	CM09 01 45	CM09 01 60	CM09 01 75	CM09 01 90
2	200	CM09 02 15	CM09 02 30	CM09 02 45	CM09 02 60	CM09 02 75	CM09 02 90
3	290	CM09 03 15	CM09 03 30	CM09 03 45	CM09 03 60	CM09 03 75	CM09 03 90
4	380	CM09 04 15	CM09 04 30	CM09 04 45	CM09 04 60	CM09 04 75	CM09 04 90
5	470	CM09 05 15	CM09 05 30	CM09 05 45	CM09 05 60	CM09 05 75	CM09 05 90
6	560	CM09 06 15	CM09 06 30	CM09 06 45	CM09 06 60	CM09 06 75	CM09 06 90
7	650	CM09 07 15	CM09 07 30	CM09 07 45	CM09 07 60	CM09 07 75	CM09 07 90
8	740	CM09 08 15	CM09 08 30	CM09 08 45	CM09 08 60	CM09 08 75	CM09 08 90

Rif. Catena Chains ref.
879 M K325
880 M K325
880 M K330
881 M K325
881 M K330
581 M K325

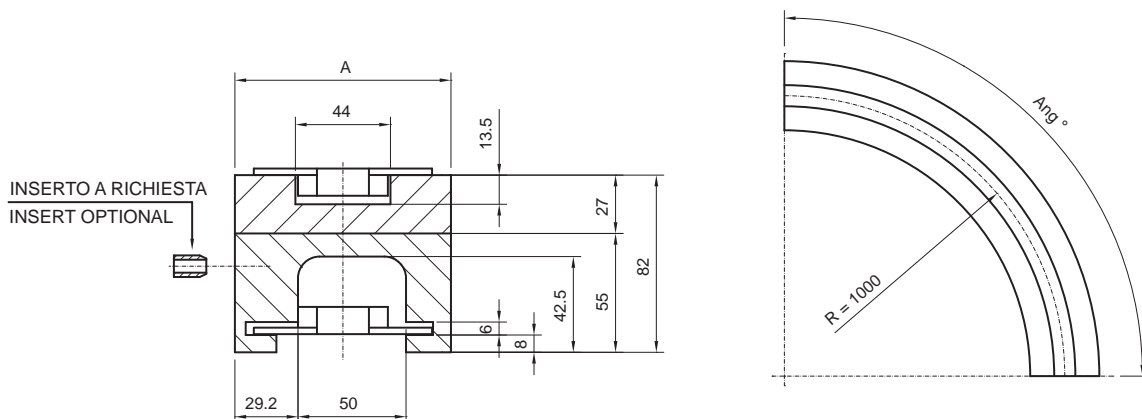
N° di vie superiori a richiesta - More than 8 tracks on request



VERSIONE CM05C / VERSION CM05C							
N° VIE Nr. of TRACKS	A	Angolo curva / Curve angle					
		15°	30°	45°	60°	75°	90°
1	100	CM05C 01 15	CM05C 01 30	CM05C 01 45	CM05C 01 60	CM05C 01 75	CM05C 01 90

Rif. Catena Chains ref.
879 M K325
880 M K325
880 M K330
881 M K325
881 M K330
581 M K325

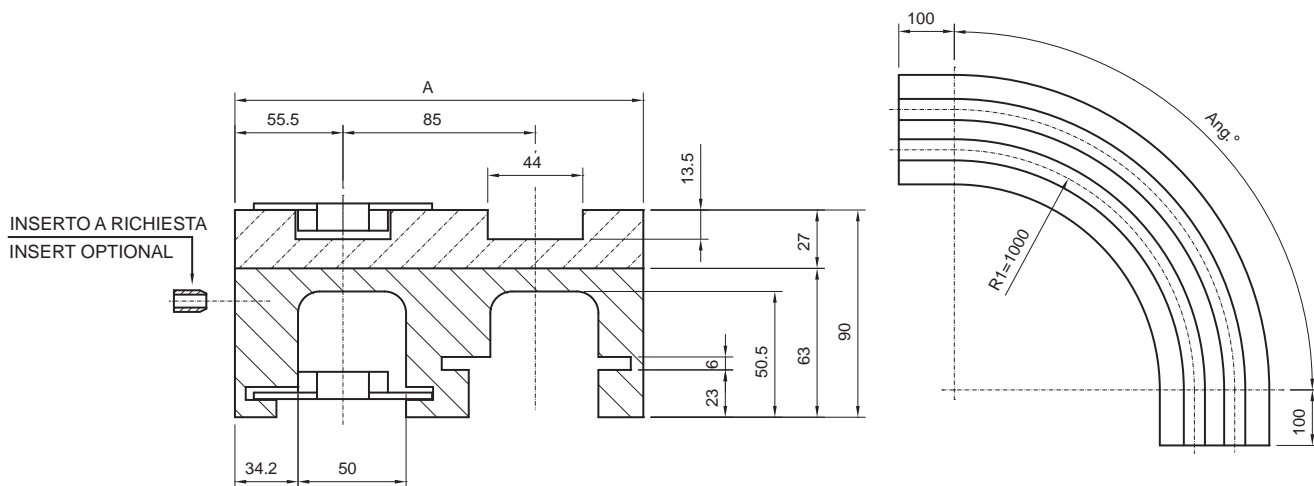
N° di vie superiori a richiesta - More than 1 track on request



Rif. Catena Chains ref.
879 M K325
880 M K325
880 M K330
881 M K325
881 M K330
581 M K325

VERSIONE CM05D / VERSION CM05D							
N° VIE Nr. of TRACKS	A	Angolo curva / Curve angle					
		15°	30°	45°	60°	75°	90°
1	100	CM05D 01 15	CM05D 01 30	CM05D 01 45	CM05D 01 60	CM05D 01 75	CM05D 01 90

N° di vie superiori a richiesta - More than 1 track on request



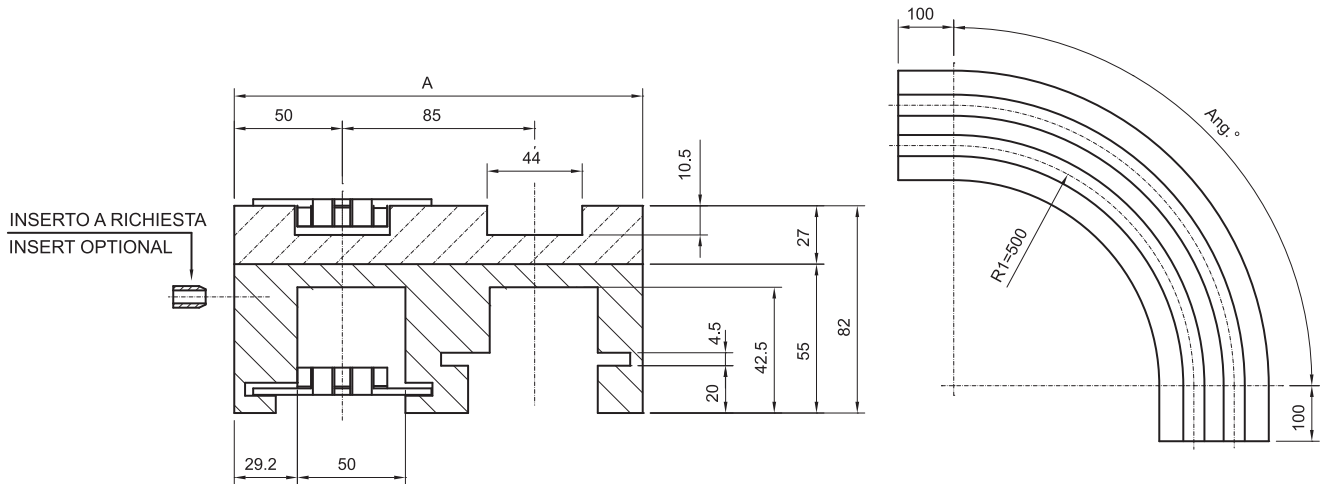
Rif. Catena Chains ref.
879 M K325
880 M K325
880 M K330
881 M K325
881 M K330
581 M K325

VERSIONE CM43 / VERSION CM43							
N° VIE Nr. of TRACKS	A	Angolo curva / Curve angle					
		15°	30°	45°	60°	75°	90°
1	111	CM43 01 15	CM43 01 30	CM43 01 45	CM43 01 60	CM43 01 75	CM43 01 90
2	196	CM43 02 15	CM43 02 30	CM43 02 45	CM43 02 60	CM43 02 75	CM43 02 90
3	281	CM43 03 15	CM43 03 30	CM43 03 45	CM43 03 60	CM43 03 75	CM43 03 90
4	366	CM43 04 15	CM43 04 30	CM43 04 45	CM43 04 60	CM43 04 75	CM43 04 90
5	451	CM43 05 15	CM43 05 30	CM43 05 45	CM43 05 60	CM43 05 75	CM43 05 90
6	536	CM43 06 15	CM43 06 30	CM43 06 45	CM43 06 60	CM43 06 75	CM43 06 90
7	621	CM43 07 15	CM43 07 30	CM43 07 45	CM43 07 60	CM43 07 75	CM43 07 90

N° di vie superiori a richiesta - More than 7 tracks on request



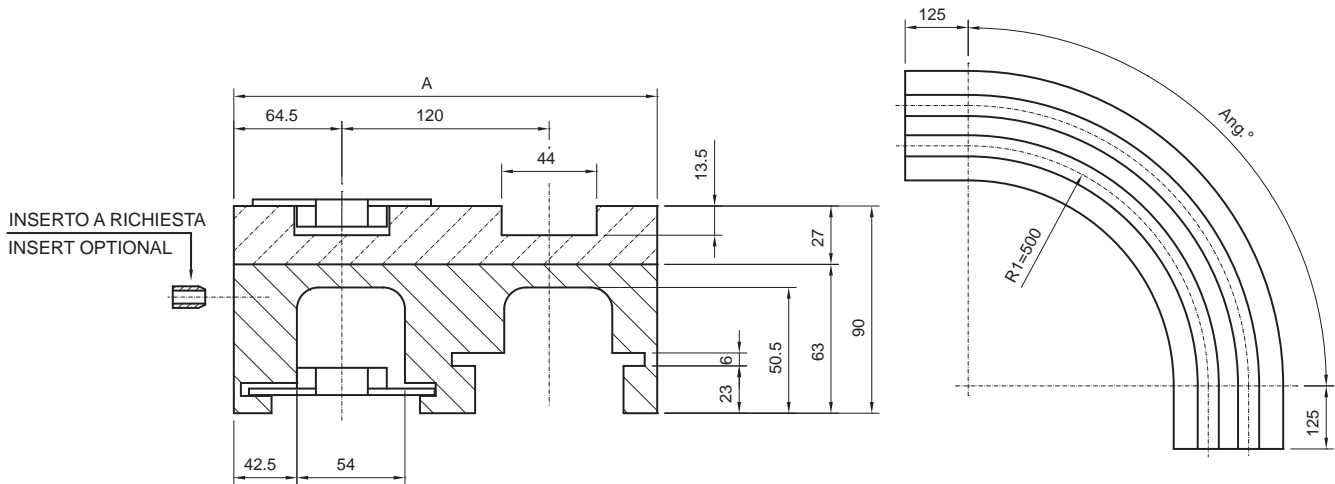
# GUIDE CURVE PER SISTEMI MAGNETICI MAGNETIC CORNER TRACKS



VERSIONE CMF06 / VERSION CMF06							
N° VIE Nr. of TRACKS	A	Angolo curva / Curve angle					
		15°	30°	45°	60°	75°	90°
1	100	CMF06 01 15	CMF06 01 30	CMF06 01 45	CMF06 01 60	CMF06 01 75	CMF06 01 90
2	185	CMF06 02 15	CMF06 02 30	CMF06 02 45	CMF06 02 60	CMF06 02 75	CMF06 02 90
3	270	CMF06 03 15	CMF06 03 30	CMF06 03 45	CMF06 03 60	CMF06 03 75	CMF06 03 90
4	355	CMF06 04 15	CMF06 04 30	CMF06 04 45	CMF06 04 60	CMF06 04 75	CMF06 04 90
5	440	CMF06 05 15	CMF06 05 30	CMF06 05 45	CMF06 05 60	CMF06 05 75	CMF06 05 90
6	525	CMF06 06 15	CMF06 06 30	CMF06 06 45	CMF06 06 60	CMF06 06 75	CMF06 06 90
7	610	CMF06 07 15	CMF06 07 30	CMF06 07 45	CMF06 07 60	CMF06 07 75	CMF06 07 90

**Rif. Catena  
Chains ref.**  
661 M K325  
661 M K330

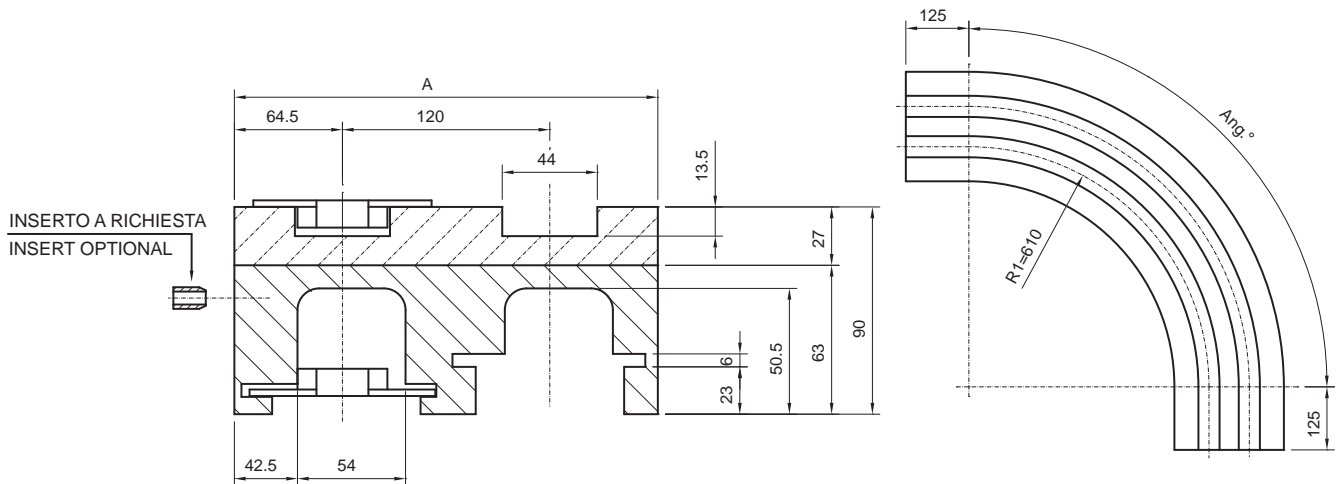
N° di vie superiori a richiesta - More than 7 tracks on request



VERSIONE CM21A / VERSION CM21A							
N° VIE Nr. of TRACKS	A	Angolo curva / Curve angle					
		15°	30°	45°	60°	75°	90°
1	129	CM21A 01 15	CM21A 01 30	CM21A 01 45	CM21A 01 60	CM21A 01 75	CM21A 01 90
2	249	CM21A 02 15	CM21A 02 30	CM21A 02 45	CM21A 02 60	CM21A 02 75	CM21A 02 90
3	369	CM21A 03 15	CM21A 03 30	CM21A 03 45	CM21A 03 60	CM21A 03 75	CM21A 03 90
4	489	CM21A 04 15	CM21A 04 30	CM21A 04 45	CM21A 04 60	CM21A 04 75	CM21A 04 90
5	609	CM21A 05 15	CM21A 05 30	CM21A 05 45	CM21A 05 60	CM21A 05 75	CM21A 05 90

**Rif. Catena  
Chains ref.**  
879 M K450  
880 M K450  
881 M K450

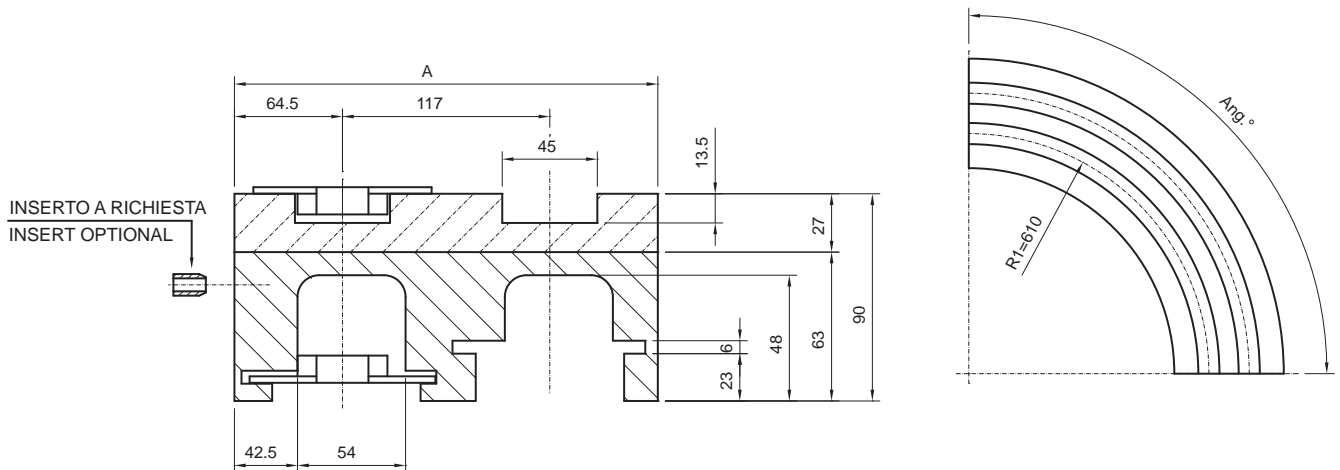
N° di vie superiori a richiesta - More than 5 tracks on request



Rif. Catena Chains ref.
879 M K450
880 M K450
881 M K450

VERSIONE CM22A / VERSION CM22A							
N° VIE Nr. of TRACKS	A	Angolo curva / Curve angle					
		15°	30°	45°	60°	75°	90°
1	129	CM22A 01 15	CM22A 01 30	CM22A 01 45	CM22A 01 60	CM22A 01 75	CM22A 01 90
2	249	CM22A 02 15	CM22A 02 30	CM22A 02 45	CM22A 02 60	CM22A 02 75	CM22A 02 90
3	369	CM22A 03 15	CM22A 03 30	CM22A 03 45	CM22A 03 60	CM22A 03 75	CM22A 03 90
4	489	CM22A 04 15	CM22A 04 30	CM22A 04 45	CM22A 04 60	CM22A 04 75	CM22A 04 90
5	609	CM22A 05 15	CM22A 05 30	CM22A 05 45	CM22A 05 60	CM22A 05 75	CM22A 05 90

N° di vie superiori a richiesta - More than 5 tracks on request



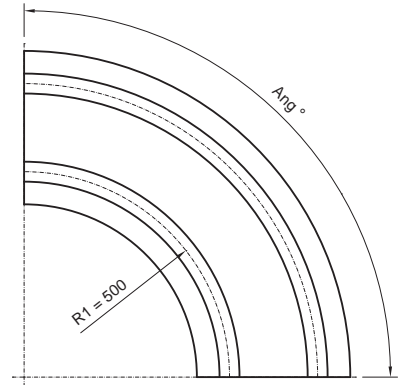
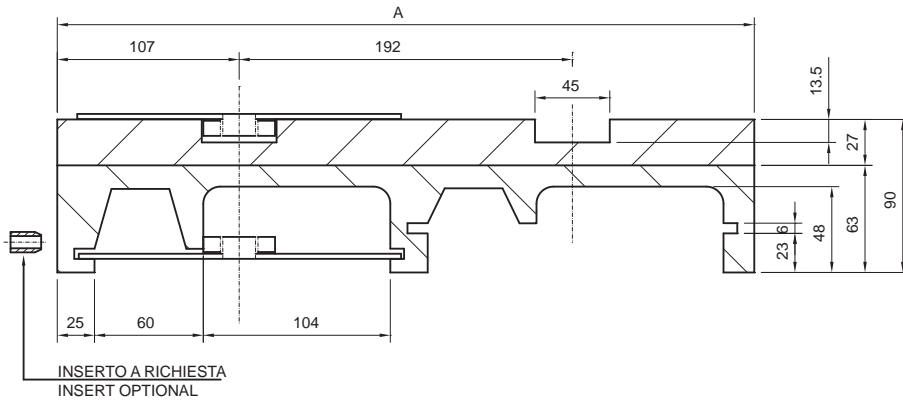
Rif. Catena Chains ref.
879 M K450
880 M K450
881 M K450

VERSIONE CM27 / VERSION CM27							
N° VIE Nr. of TRACKS	A	Angolo curva / Curve angle					
		15°	30°	45°	60°	75°	90°
1	129	CM27 01 15	CM27 01 30	CM27 01 45	CM27 01 60	CM27 01 75	CM27 01 90
2	246	CM27 02 15	CM27 02 30	CM27 02 45	CM27 02 60	CM27 02 75	CM27 02 90
3	363	CM27 03 15	CM27 03 30	CM27 03 45	CM27 03 60	CM27 03 75	CM27 03 90
4	480	CM27 04 15	CM27 04 30	CM27 04 45	CM27 04 60	CM27 04 75	CM27 04 90
5	597	CM27 05 15	CM27 05 30	CM27 05 45	CM27 05 60	CM27 05 75	CM27 05 90
6	714	CM27 06 15	CM27 06 30	CM27 06 45	CM27 06 60	CM27 06 75	CM27 06 90
7	831	CM27 07 15	CM27 07 30	CM27 07 45	CM27 07 60	CM27 07 75	CM27 07 90
8	948	CM27 08 15	CM27 08 30	CM27 08 45	CM27 08 60	CM27 08 75	CM27 08 90

N° di vie superiori a richiesta - More than 8 tracks on request



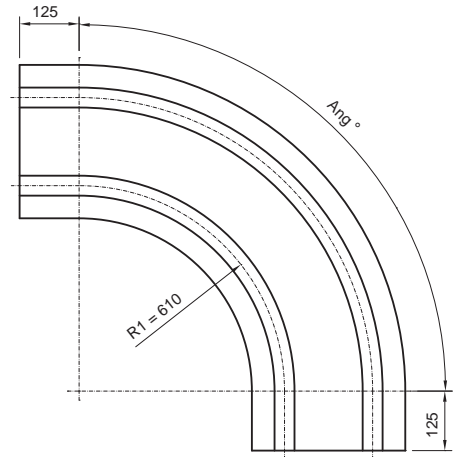
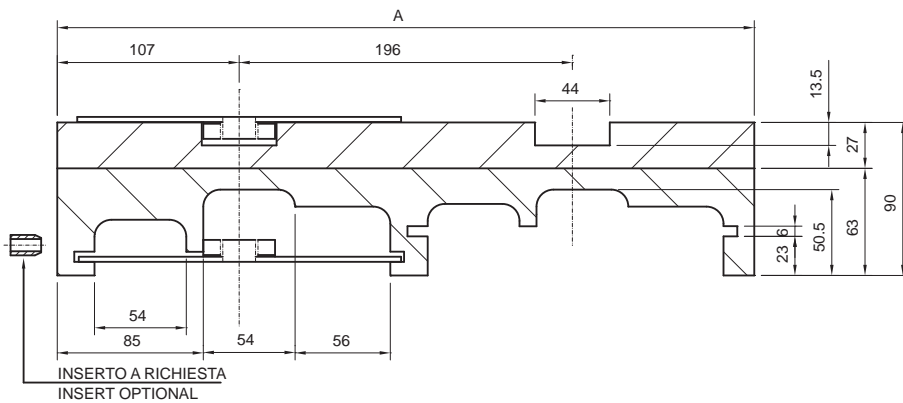
# GUIDE CURVE PER SISTEMI MAGNETICI MAGNETIC CORNER TRACKS



VERSIONE CM60 / VERSION CM60							
N° VIE Nr. of TRACKS	A	Angolo curva / Curve angle					
		15°	30°	45°	60°	75°	90°
1	214	CM60 01 15	CM60 01 30	CM60 01 45	CM60 01 60	CM60 01 75	CM60 01 90
2	406	CM60 02 15	CM60 02 30	CM60 02 45	CM60 02 60	CM60 02 75	CM60 02 90
3	602	CM60 03 15	CM60 03 30	CM60 03 45	CM60 03 60	CM60 03 75	CM60 03 90

Rif. Catena Chains ref.
880 M K750
881 M K750

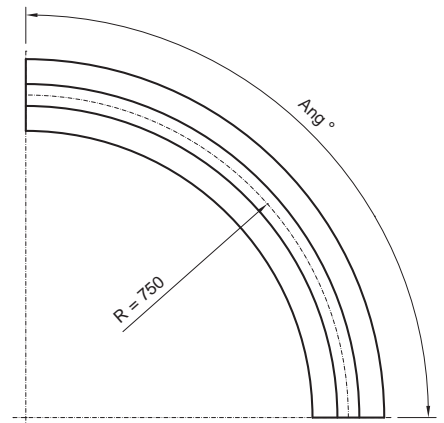
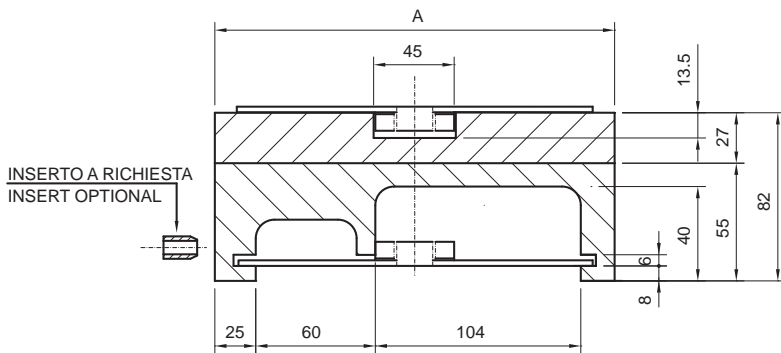
N° di vie superiori a richiesta - More than 3 tracks on request



VERSIONE CM61 / VERSION CM61							
N° VIE Nr. of TRACKS	A	Angolo curva / Curve angle					
		15°	30°	45°	60°	75°	90°
1	214	CM61 01 15	CM61 01 30	CM61 01 45	CM61 01 60	CM61 01 75	CM61 01 90
2	410	CM61 02 15	CM61 02 30	CM61 02 45	CM61 02 60	CM61 02 75	CM61 02 90
3	606	CM61 03 15	CM61 03 30	CM61 03 45	CM61 03 60	CM61 03 75	CM61 03 90
4	802	CM61 04 15	CM61 04 30	CM61 04 45	CM61 04 60	CM61 04 75	CM61 04 90

Rif. Catena Chains ref.
880 M K750
881 M K750

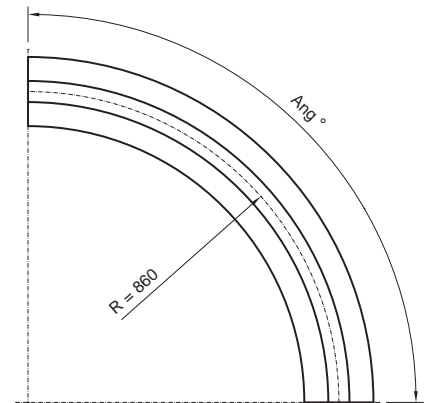
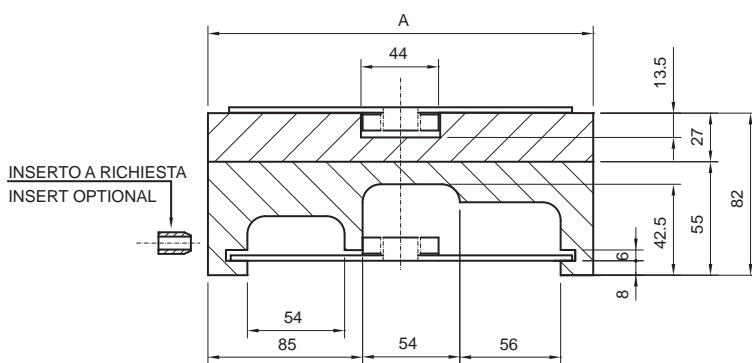
N° di vie superiori a richiesta - More than 4 tracks on request



<b>Rif. Catena Chains ref.</b>
880 M K750
881 M K750

VERSIONE CM62 / VERSION CM62							
N° VIE Nr. of TRACKS	A	Angolo curva / Curve angle					
		15°	30°	45°	60°	75°	90°
1	214	CM62 01 15	CM62 01 30	CM62 01 45	CM62 01 60	CM62 01 75	CM62 01 90

N° di vie superiori a richiesta - *More than 1 track on request*



<b>Rif. Catena Chains ref.</b>
880 M K750
881 M K750

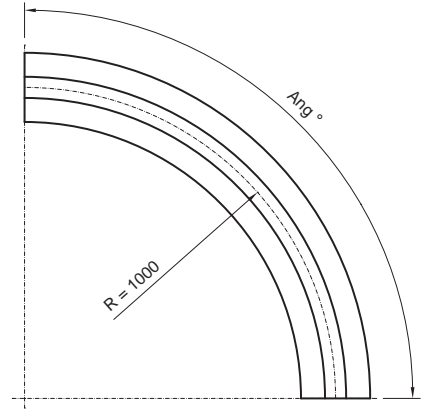
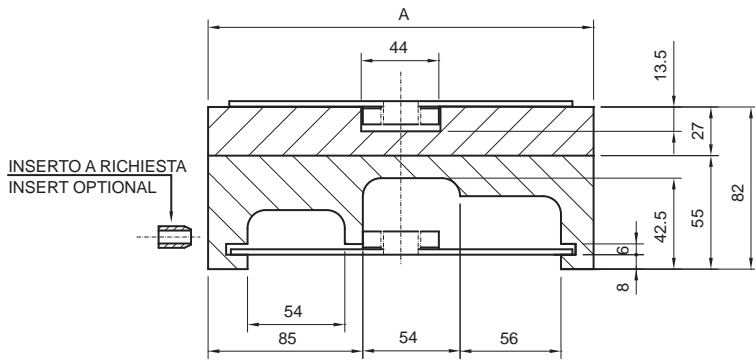
VERSIONE CM66 / VERSION CM66							
N° VIE Nr. of TRACKS	A	Angolo curva / Curve angle					
		15°	30°	45°	60°	75°	90°
1	214	CM66 01 15	CM66 01 30	CM66 01 45	CM66 01 60	CM66 01 75	CM66 01 90

N° di vie superiori a richiesta - *More than 1 track on request*





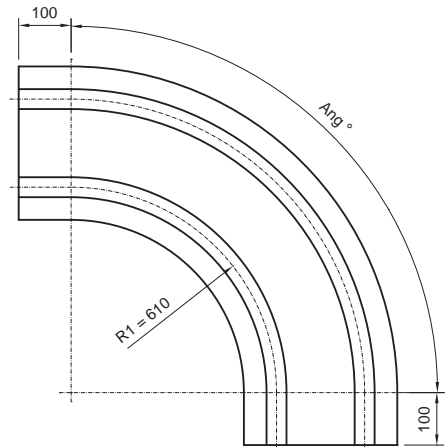
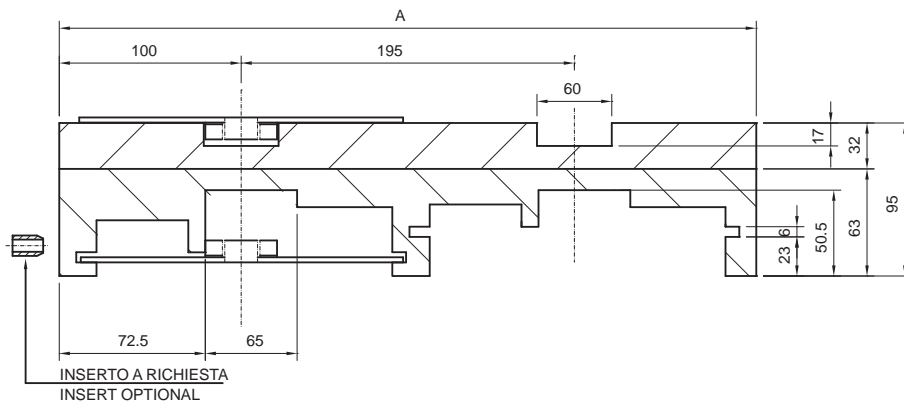
# GUIDE CURVE PER SISTEMI MAGNETICI MAGNETIC CORNER TRACKS



VERSIONE CM65 / VERSION CM65							
N° VIE Nr. of TRACKS	A	Angolo curva / Curve angle					
		15°	30°	45°	60°	75°	90°
1	214	CM65 01 15	CM65 01 30	CM65 01 45	CM65 01 60	CM65 01 75	CM65 01 90

Rif. Catena Chains ref.
880 M K750
881 M K750

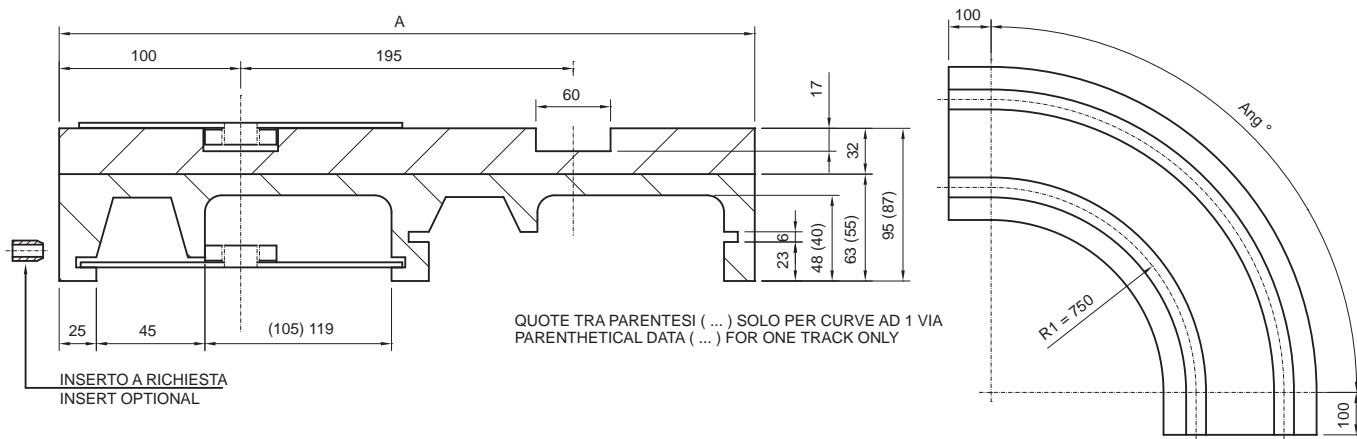
N° di vie superiori a richiesta - More than 1 track on request



VERSIONE CM81 / VERSION CM81							
N° VIE Nr. of TRACKS	A	Angolo curva / Curve angle					
		15°	30°	45°	60°	75°	90°
1	200	CM81 01 15	CM81 01 30	CM81 01 45	CM81 01 60	CM81 01 75	CM81 01 90
2	395	CM81 02 15	CM81 02 30	CM81 02 45	CM81 02 60	CM81 02 75	CM81 02 90
3	590	CM81 03 15	CM81 03 30	CM81 03 45	CM81 03 60	CM81 03 75	CM81 03 90
4	785	CM81 04 15	CM81 04 30	CM81 04 45	CM81 04 60	CM81 04 75	CM81 04 90

Rif. Catena Chains ref.
8817 M K750
8817 M G K750
882 M K750

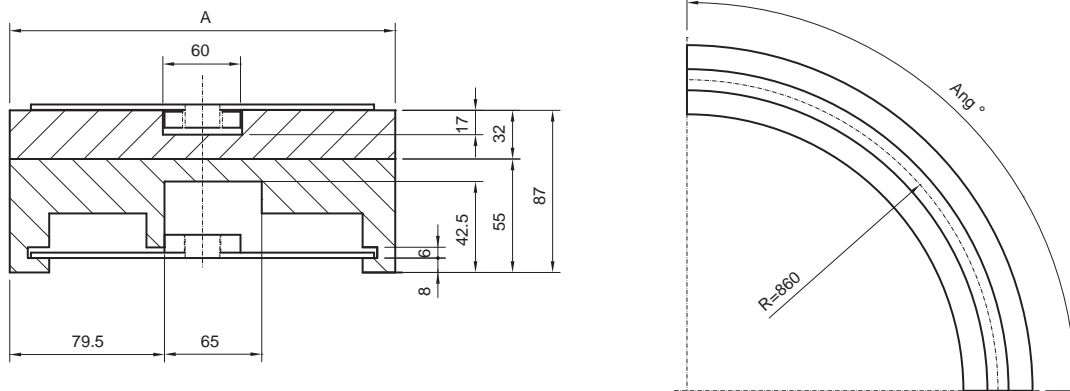
N° di vie superiori a richiesta - More than 4 tracks on request



Rif. Catena Chains ref.
8817 M K750
8817 M G K750
882 M K750

		VERSIONE CM85 / VERSION CM85					
N° VIE Nr. of TRACKS	A	Angolo curva / Curve angle					
		15°	30°	45°	60°	75°	90°
1	200	CM85 01 15	CM85 01 30	CM85 01 45	CM85 01 60	CM85 01 75	CM85 01 90
2	395	CM85 02 15	CM85 02 30	CM85 02 45	CM85 02 60	CM85 02 75	CM85 02 90
3	590	CM85 03 15	CM85 03 30	CM85 03 45	CM85 03 60	CM85 03 75	CM85 03 90

N° di vie superiori a richiesta - More than 3 tracks on request



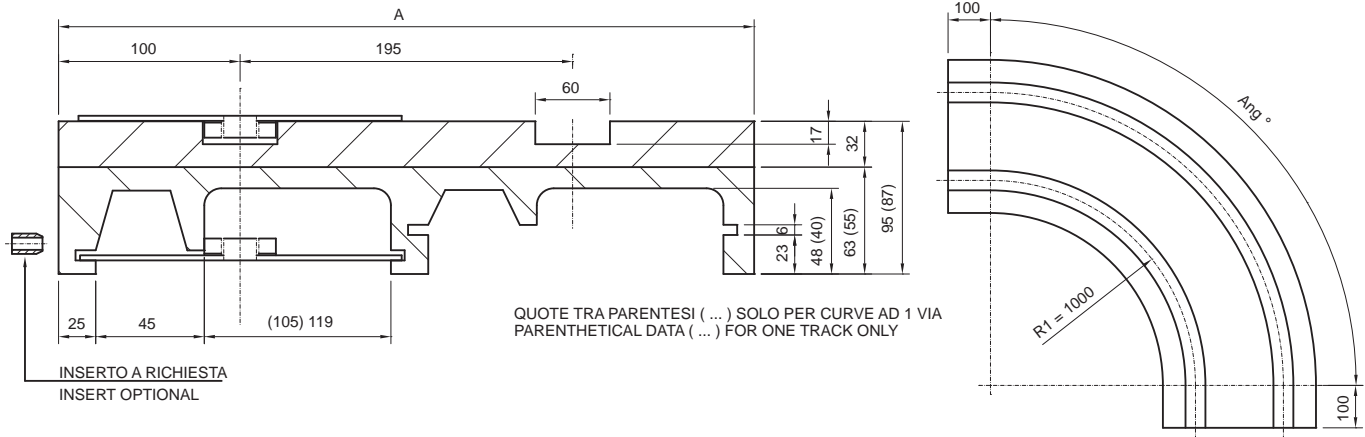
Rif. Catena Chains ref.
8817 M K750
8817 M G K750
882 M K750

		VERSIONE CM86 / VERSION CM86					
N° VIE Nr. of TRACKS	A	Angolo curva / Curve angle					
		15°	30°	45°	60°	75°	90°
1	214	CM86 01 15	CM86 01 30	CM86 01 45	CM86 01 60	CM86 01 75	CM86 01 90

N° di vie superiori a richiesta - More than 1 track on request



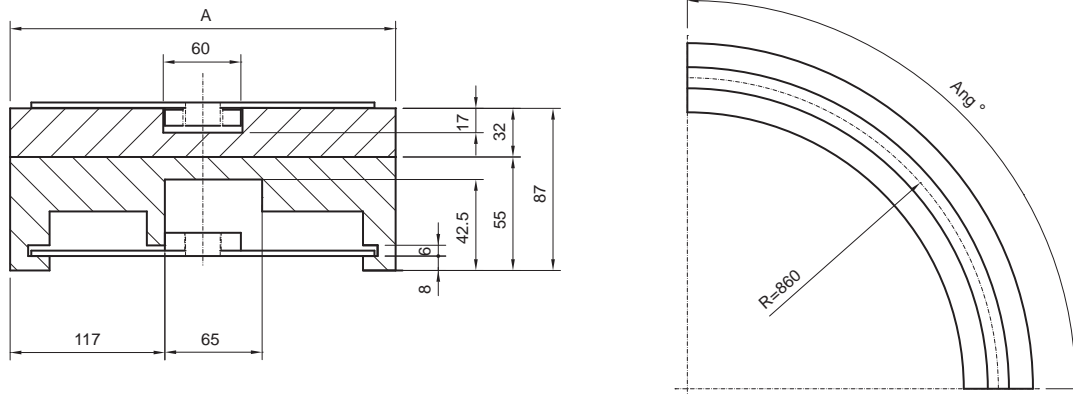
# GUIDE CURVE PER SISTEMI MAGNETICI MAGNETIC CORNER TRACKS



VERSIONE CM80 / VERSION CM80							
N° VIE Nr. of TRACKS	A	Angolo curva / Curve angle					
		15°	30°	45°	60°	75°	90°
1	200	CM80 01 15	CM80 01 30	CM80 01 45	CM80 01 60	CM80 01 75	CM80 01 90
2	395	CM80 02 15	CM80 02 30	CM80 02 45	CM80 02 60	CM80 02 75	CM80 02 90
3	590	CM80 03 15	CM80 03 30	CM80 03 45	CM80 03 60	CM80 03 75	CM80 03 90

Rif. Catena Chains ref.
8817 M K750
8817 M G K750
882 M K750

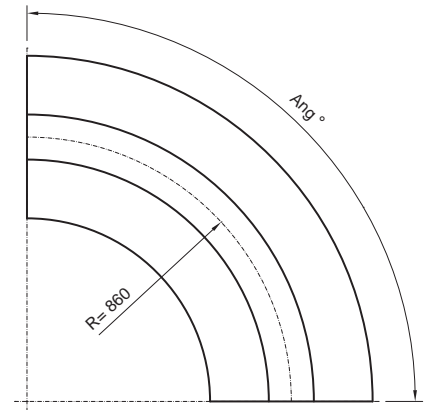
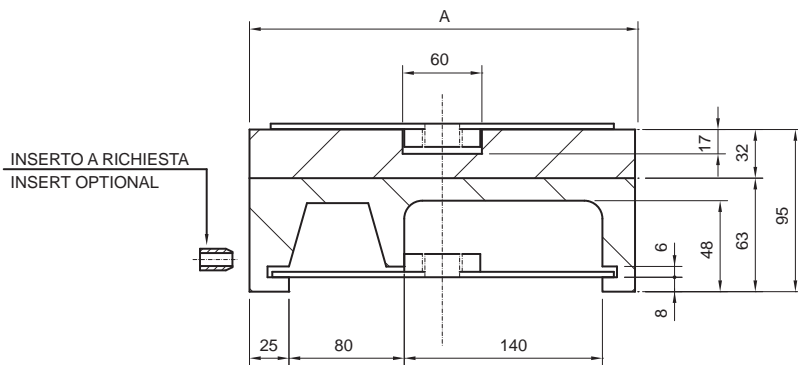
N° di vie superiori a richiesta - More than 3 tracks on request



VERSIONE CM91 / VERSION CM91							
N° VIE Nr. of TRACKS	A	Angolo curva / Curve angle					
		15°	30°	45°	60°	75°	90°
1	290	CM91 01 15	CM91 01 30	CM91 01 45	CM91 01 60	CM91 01 75	CM91 01 90

Rif. Catena Chains ref.
882 M K1000

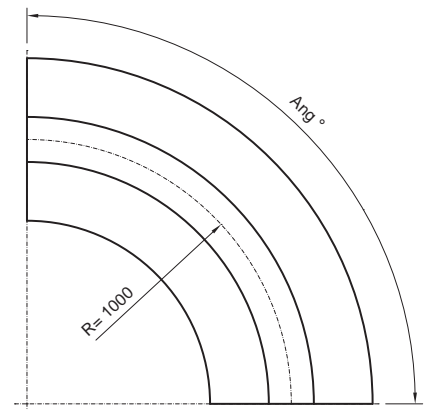
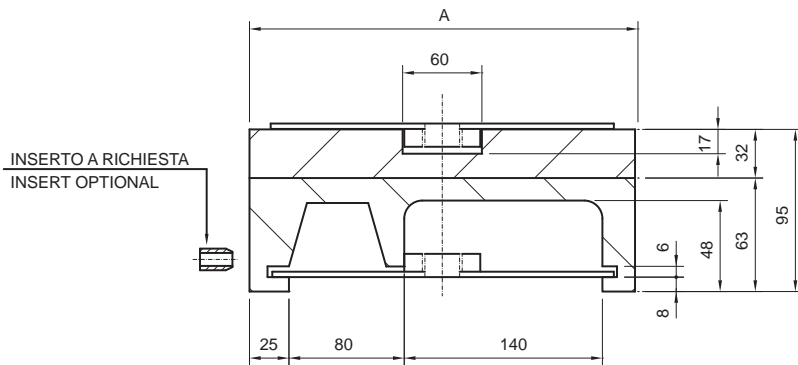
N° di vie superiori a richiesta - More than 1 track on request



**Rif. Catena  
Chains ref.**  
882 M K1000

VERSIONE CM93 / VERSION CM93							
N° VIE Nr. of TRACKS	A	Angolo curva / Curve angle					
		15°	30°	45°	60°	75°	90°
1	270	CM93 01 15	CM93 01 30	CM93 01 45	CM93 01 60	CM93 01 75	CM93 01 90

N° di vie superiori a richiesta - *More than 1 track on request*



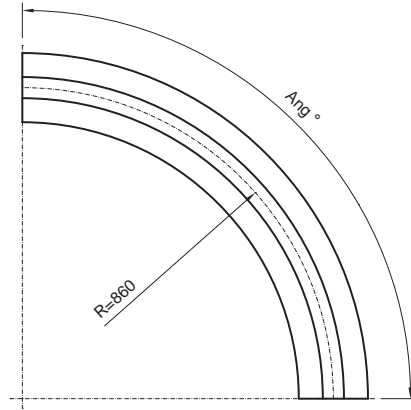
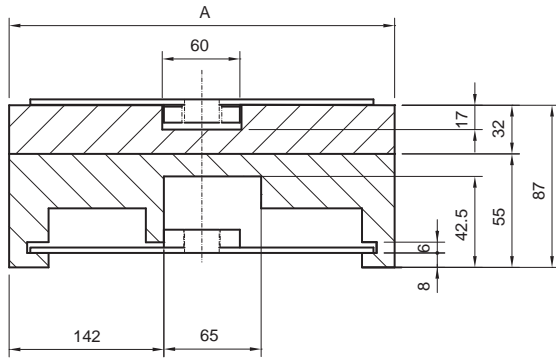
**Rif. Catena  
Chains ref.**  
882 M K1000

VERSIONE CM94 / VERSION CM94							
N° VIE Nr. of TRACKS	A	Angolo curva / Curve angle					
		15°	30°	45°	60°	75°	90°
1	270	CM94 01 15	CM94 01 30	CM94 01 45	CM94 01 60	CM94 01 75	CM94 01 90

N° di vie superiori a richiesta - *More than 1 track on request*



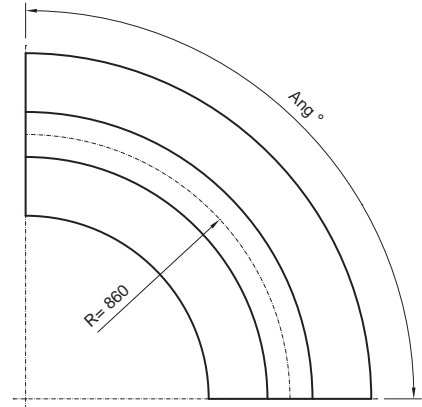
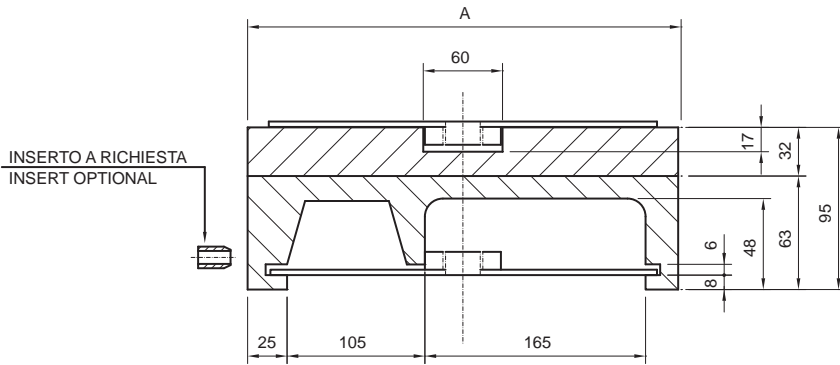
# GUIDE CURVE PER SISTEMI MAGNETICI MAGNETIC CORNER TRACKS



VERSIONE CM96 / VERSION CM96							
N° VIE Nr. of TRACKS	A	Angolo curva / Curve angle					
		15°	30°	45°	60°	75°	90°
1	340	CM96 01 15	CM96 01 30	CM96 01 45	CM96 01 60	CM96 01 75	CM96 01 90

Rif. Catena  
Chains ref.  
882 M K1200

N° di vie superiori a richiesta - More than 1 track on request

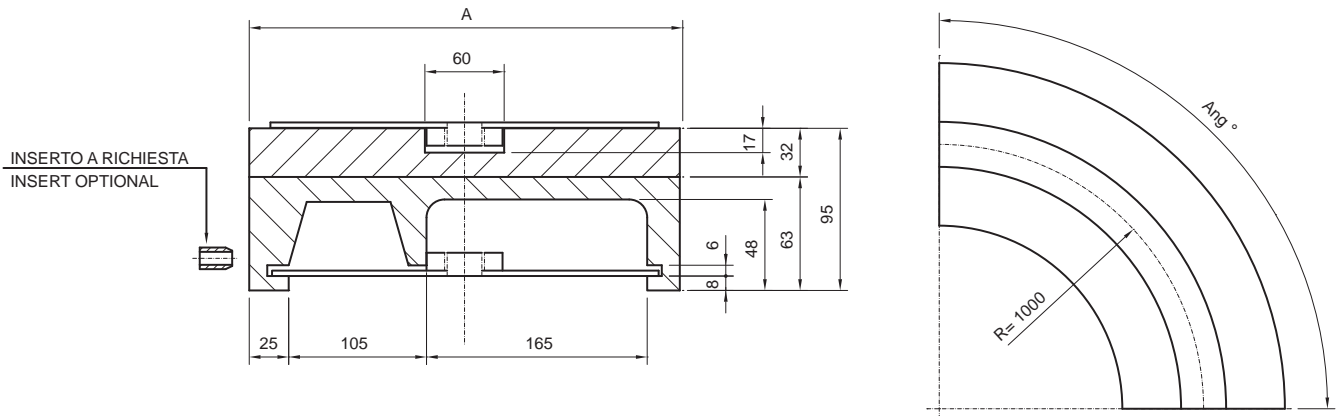


VERSIONE CM97 / VERSION CM97							
N° VIE Nr. of TRACKS	A	Angolo curva / Curve angle					
		15°	30°	45°	60°	75°	90°
1	320	CM97 01 15	CM97 01 30	CM97 01 45	CM97 01 60	CM97 01 75	CM97 01 90

Rif. Catena  
Chains ref.  
882 M K1200

N° di vie superiori a richiesta - More than 1 track on request

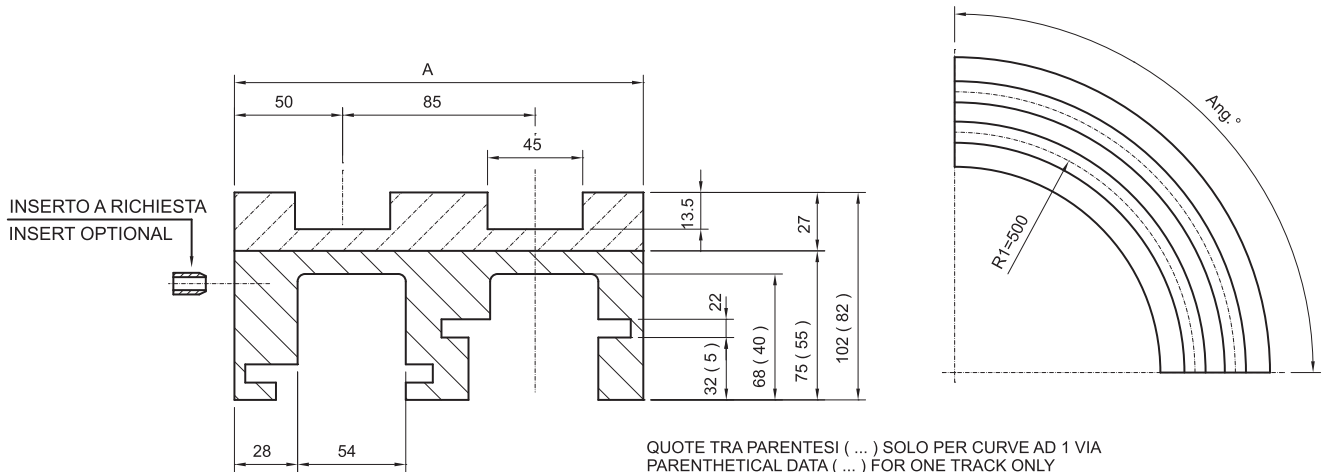
# GUIDE CURVE PER SISTEMI MAGNETICI MAGNETIC CORNER TRACKS



**Rif. Catena  
Chains ref.**  
882 M K1200

VERSIONE CM98 / VERSION CM98							
N° VIE Nr. of TRACKS	A	Angolo curva / Curve angle					
		15°	30°	45°	60°	75°	90°
1	320	CM98 01 15	CM98 01 30	CM98 01 45	CM98 01 60	CM98 01 75	CM98 01 90

N° di vie superiori a richiesta - More than 1 track on request



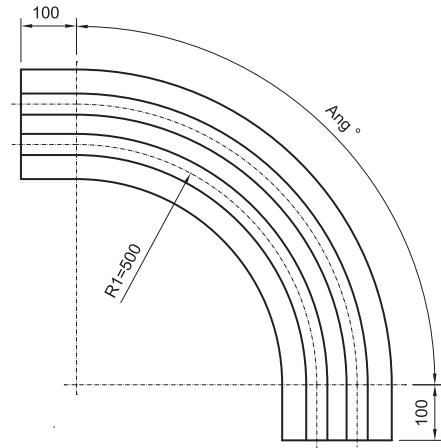
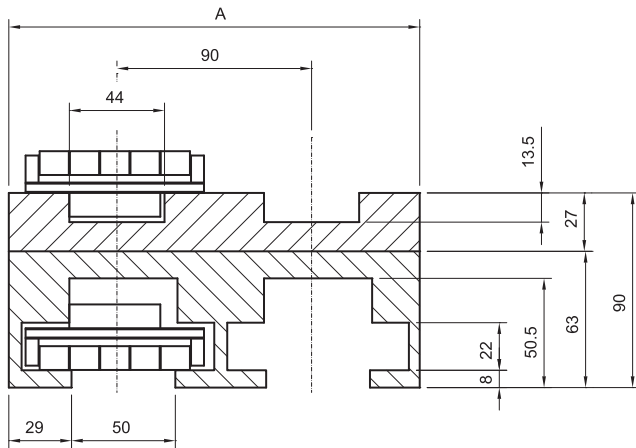
**Rif. Catena  
Chains ref.**  
LBP879 M K325

VERSIONE CMP68C / VERSION CMP68C							
N° VIE Nr. of TRACKS	A	Angolo curva / Curve angle					
		15°	30°	45°	60°	75°	90°
1	100	CMP68C 01 15	CMP68C 01 30	CMP68C 01 45	CMP68C 01 60	CMP68C 01 75	CMP68C 01 90
2	185	CMP68C 02 15	CMP68C 02 30	CMP68C 02 45	CMP68C 02 60	CMP68C 02 75	CMP68C 02 90
3	270	CMP68C 03 15	CMP68C 03 30	CMP68C 03 45	CMP68C 03 60	CMP68C 03 75	CMP68C 03 90
4	355	CMP68C 04 15	CMP68C 04 30	CMP68C 04 45	CMP68C 04 60	CMP68C 04 75	CMP68C 04 90
5	440	CMP68C 05 15	CMP68C 05 30	CMP68C 05 45	CMP68C 05 60	CMP68C 05 75	CMP68C 05 90
6	525	CMP68C 06 15	CMP68C 06 30	CMP68C 06 45	CMP68C 06 60	CMP68C 06 75	CMP68C 06 90
7	610	CMP68C 07 15	CMP68C 07 30	CMP68C 07 45	CMP68C 07 60	CMP68C 07 75	CMP68C 07 90
8	695	CMP68C 08 15	CMP68C 08 30	CMP68C 08 45	CMP68C 08 60	CMP68C 08 75	CMP68C 08 90

N° di vie superiori a richiesta - More than 8 tracks on request



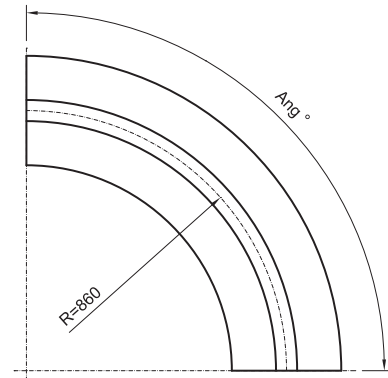
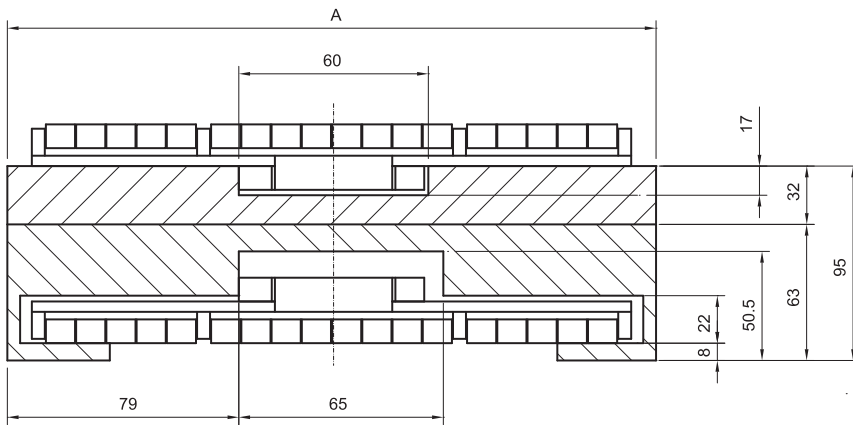
# GUIDE CURVE PER SISTEMI MAGNETICI MAGNETIC CORNER TRACKS



VERSIONE CMP02 / VERSION CMP02							
N° VIE Nr. of TRACKS	A	Angolo curva / Curve angle					
		15°	30°	45°	60°	75°	90°
1	100	CMP02 01 15	CMP02 01 30	CMP02 01 45	CMP02 01 60	CMP02 01 75	CMP02 01 90
2	190	CMP02 02 15	CMP02 02 30	CMP02 02 45	CMP02 02 60	CMP02 02 75	CMP02 02 90
3	280	CMP02 03 15	CMP02 03 30	CMP02 03 45	CMP02 03 60	CMP02 03 75	CMP02 03 90
4	370	CMP02 04 15	CMP02 04 30	CMP02 04 45	CMP02 04 60	CMP02 04 75	CMP02 04 90
5	460	CMP02 05 15	CMP02 05 30	CMP02 05 45	CMP02 05 60	CMP02 05 75	CMP02 05 90
6	550	CMP02 06 15	CMP02 06 30	CMP02 06 45	CMP02 06 60	CMP02 06 75	CMP02 06 90

Rif. Catena  
Chains ref.  
LBP 882 M K325

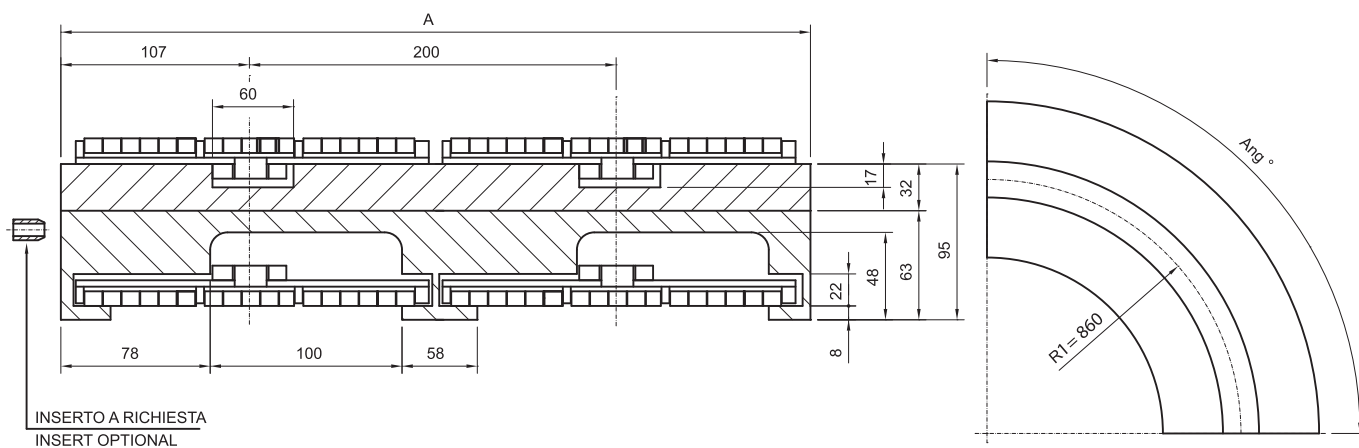
N° di vie superiori a richiesta - More than 6 tracks on request



VERSIONE CMP861 / VERSION CMP861							
N° VIE Nr. of TRACKS	A	Angolo curva / Curve angle					
		15°	30°	45°	60°	75°	90°
1	214	CMP861 01 15	CMP861 01 30	CMP861 01 45	CMP861 01 60	CMP861 01 75	CMP861 01 90

Rif. Catena  
Chains ref.  
LBP882 M K750

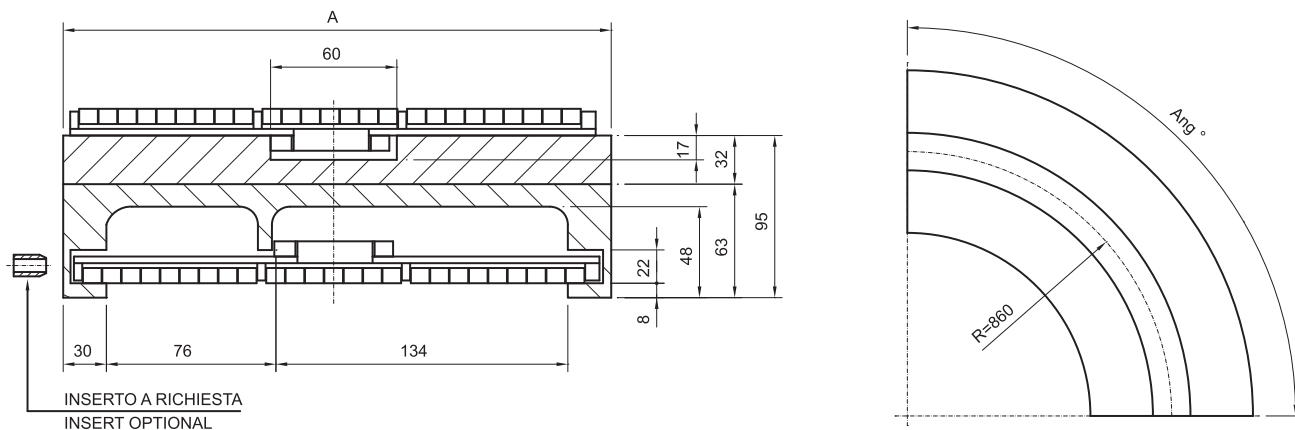
N° di vie superiori a richiesta - More than 1 track on request



**Rif. Catena  
Chains ref.**  
LBP882 M K750

		<b>VERSIONE CMP86C / VERSION CMP86C</b>					
N° VIE Nr. of TRACKS	A	Angolo curva / Curve angle					
		15°	30°	45°	60°	75°	90°
1	214	CMP86C 01 15	CMP86C 01 30	CMP86C 01 45	CMP86C 01 60	CMP86C 01 75	CMP86C 01 90
2	414	CMP86C 02 15	CMP86C 02 30	CMP86C 02 45	CMP86C 02 60	CMP86C 02 75	CMP86C 02 90
3	614	CMP86C 03 15	CMP86C 03 30	CMP86C 03 45	CMP86C 03 60	CMP86C 03 75	CMP86C 03 90

N° di vie superiori a richiesta - More than 3 tracks on request



**Rif. Catena  
Chains ref.**  
LBP882 M K1000

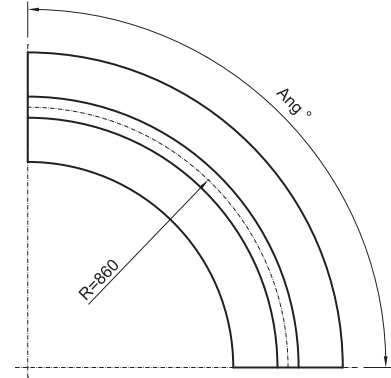
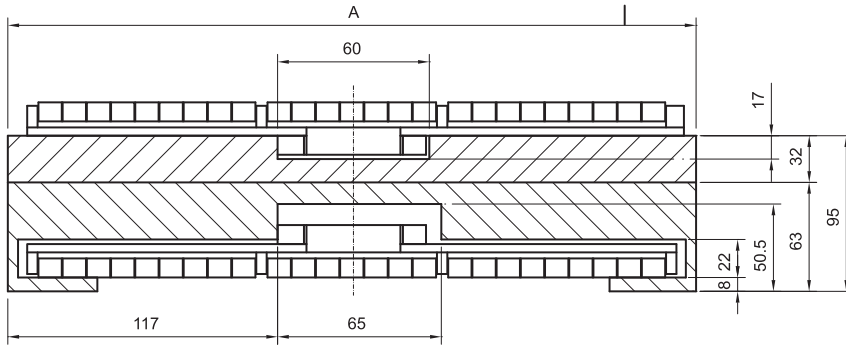
		<b>VERSIONE CMP93C / VERSION CMP93C</b>					
N° VIE Nr. of TRACKS	A	Angolo curva / Curve angle					
		15°	30°	45°	60°	75°	90°
1	270	CMP93C 01 15	CMP93C 01 30	CMP93C 01 45	CMP93C 01 60	CMP93C 01 75	CMP93C 01 90

N° di vie superiori a richiesta - More than 1 track on request





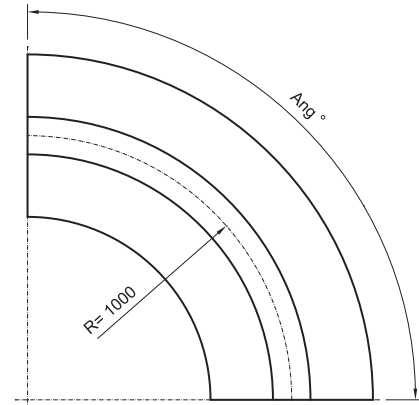
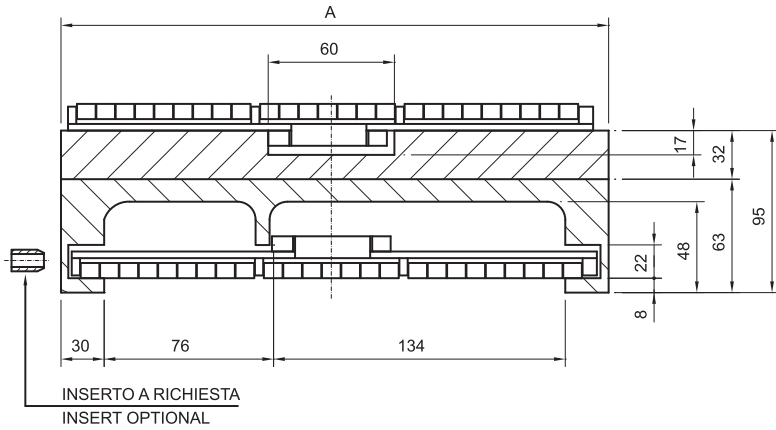
# GUIDE CURVE PER SISTEMI MAGNETICI MAGNETIC CORNER TRACKS



VERSIONE CMP91 / VERSION CMP91							
N° VIE Nr. of TRACKS	A	Angolo curva / Curve angle					
		15°	30°	45°	60°	75°	90°
1	290	CMP91 01 15	CMP91 01 30	CMP91 01 45	CMP91 01 60	CMP91 01 75	CMP91 01 90

Rif. Catena  
Chains ref.  
LBP882 M K1000

N° di vie superiori a richiesta - More than 1 track on request

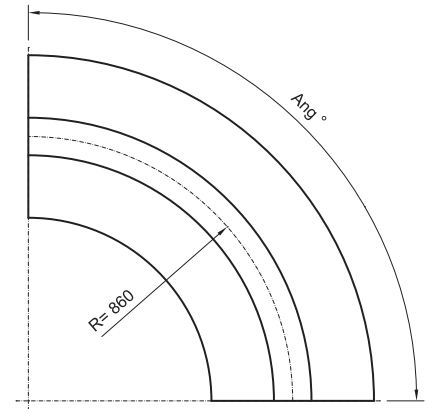
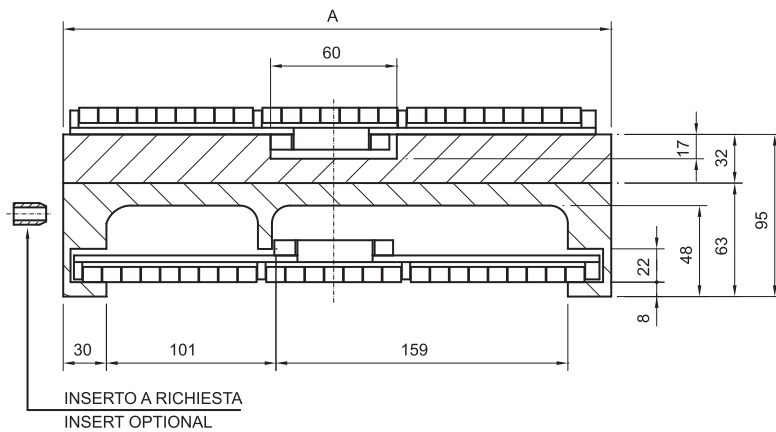


VERSIONE CMP94C / VERSION CMP94C							
N° VIE Nr. of TRACKS	A	Angolo curva / Curve angle					
		15°	30°	45°	60°	75°	90°
1	270	CMP94C 01 15	CMP94C 01 30	CMP94C 01 45	CMP94C 01 60	CMP94C 01 75	CMP94C 01 90

Rif. Catena  
Chains ref.  
LBP882 M K1000

N° di vie superiori a richiesta - More than 1 track on request

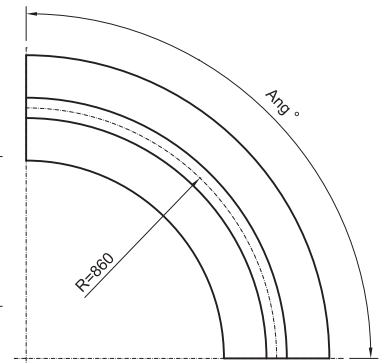
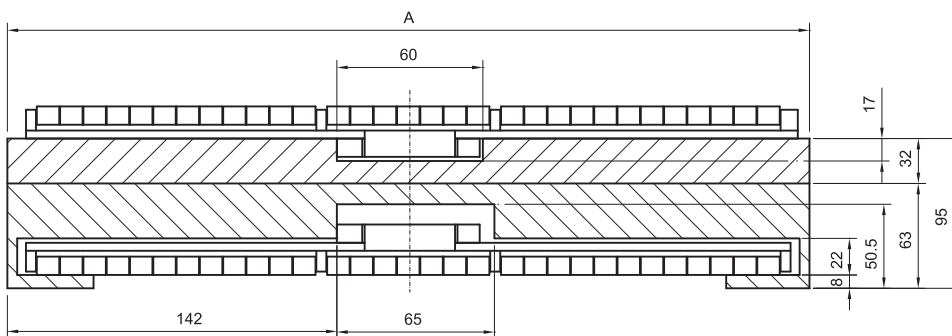
# GUIDE CURVE PER SISTEMI MAGNETICI MAGNETIC CORNER TRACKS



**Rif. Catena  
Chains ref.**  
LBP882 M K1200

VERSIONE CMP97C / VERSION CMP97C							
N° VIE Nr. of TRACKS	A	Angolo curva / Curve angle					
		15°	30°	45°	60°	75°	90°
1	320	CMP97C 01 15	CMP97C 01 30	CMP97C 01 45	CMP97C 01 60	CMP97C 01 75	CMP97C 01 90

N° di vie superiori a richiesta - *More than 1 track on request*



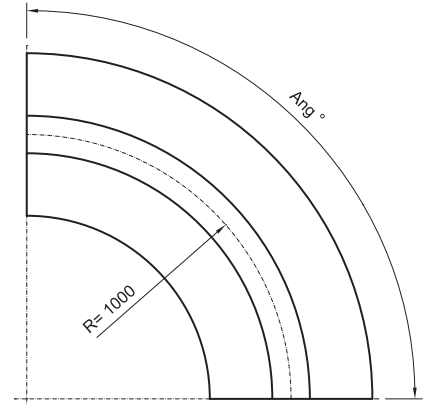
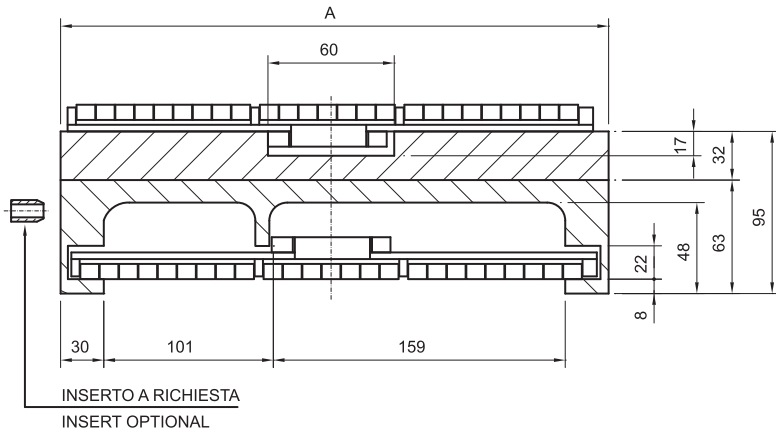
**Rif. Catena  
Chains ref.**  
LBP882 M K1200

VERSIONE CMP96 / VERSION CMP96							
N° VIE Nr. of TRACKS	A	Angolo curva / Curve angle					
		15°	30°	45°	60°	75°	90°
1	340	CMP96 01 15	CMP96 01 30	CMP96 01 45	CMP96 01 60	CMP96 01 75	CMP96 01 90

N° di vie superiori a richiesta - *More than 1 track on request*



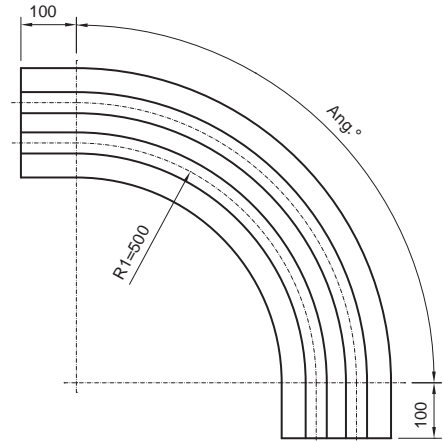
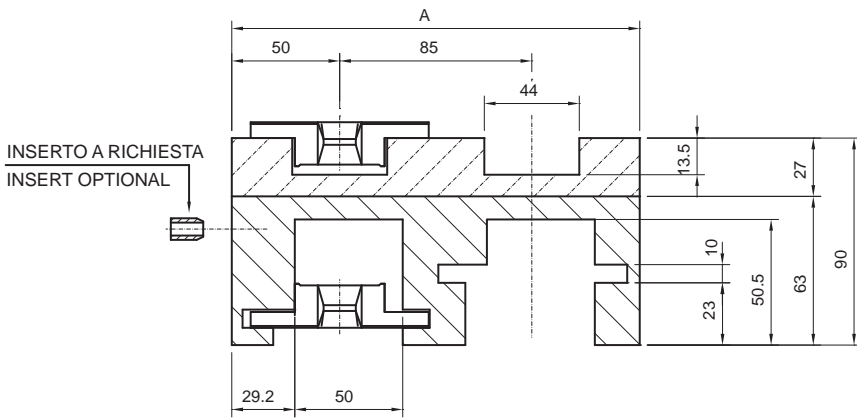
# GUIDE CURVE PER SISTEMI MAGNETICI MAGNETIC CORNER TRACKS



VERSIONE CMP98C / VERSION CMP98C							
N° VIE Nr. of TRACKS	A	Angolo curva / Curve angle					
		15°	30°	45°	60°	75°	90°
1	320	CMP98C 01 15	CMP98C 01 30	CMP98C 01 45	CMP98C 01 60	CMP98C 01 75	CMP98C 01 90

Rif. Catena  
Chains ref.  
LBP882 M K1200

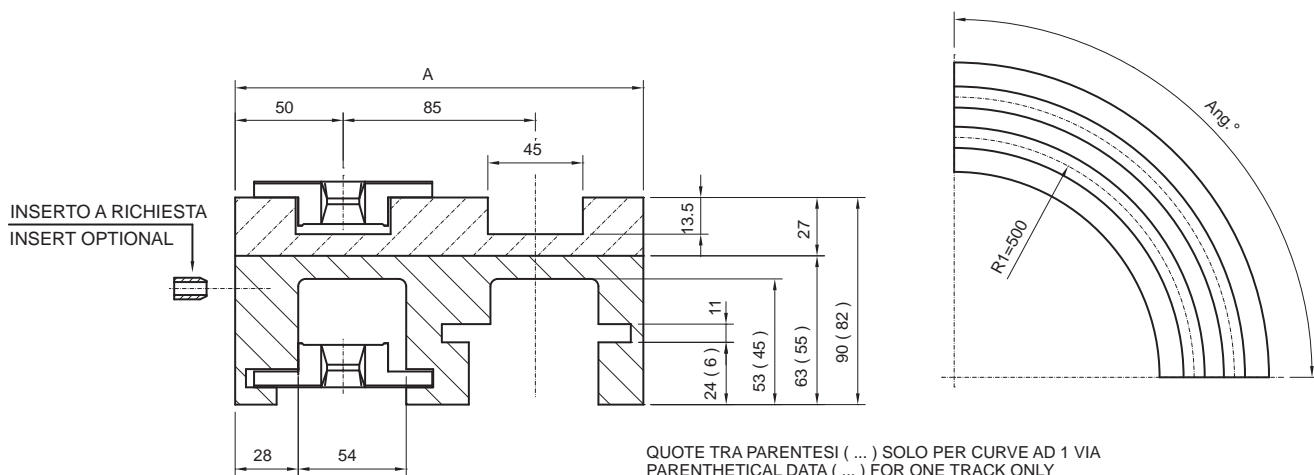
N° di vie superiori a richiesta - More than 1 track on request



VERSIONE CMB06 / VERSION CMB06							
N° VIE Nr. of TRACKS	A	Angolo curva / Curve angle					
		15°	30°	45°	60°	75°	90°
1	100	CMB06 01 15	CMB06 01 30	CMB06 01 45	CMB06 01 60	CMB06 01 75	CMB06 01 90
2	185	CMB06 02 15	CMB06 02 30	CMB06 02 45	CMB06 02 60	CMB06 02 75	CMB06 02 90
3	270	CMB06 03 15	CMB06 03 30	CMB06 03 45	CMB06 03 60	CMB06 03 75	CMB06 03 90
4	355	CMB06 04 15	CMB06 04 30	CMB06 04 45	CMB06 04 60	CMB06 04 75	CMB06 04 90
5	440	CMB06 05 15	CMB06 05 30	CMB06 05 45	CMB06 05 60	CMB06 05 75	CMB06 05 90
6	525	CMB06 06 15	CMB06 06 30	CMB06 06 45	CMB06 06 60	CMB06 06 75	CMB06 06 90

Rif. Catena  
Chains ref.  
780 M K330

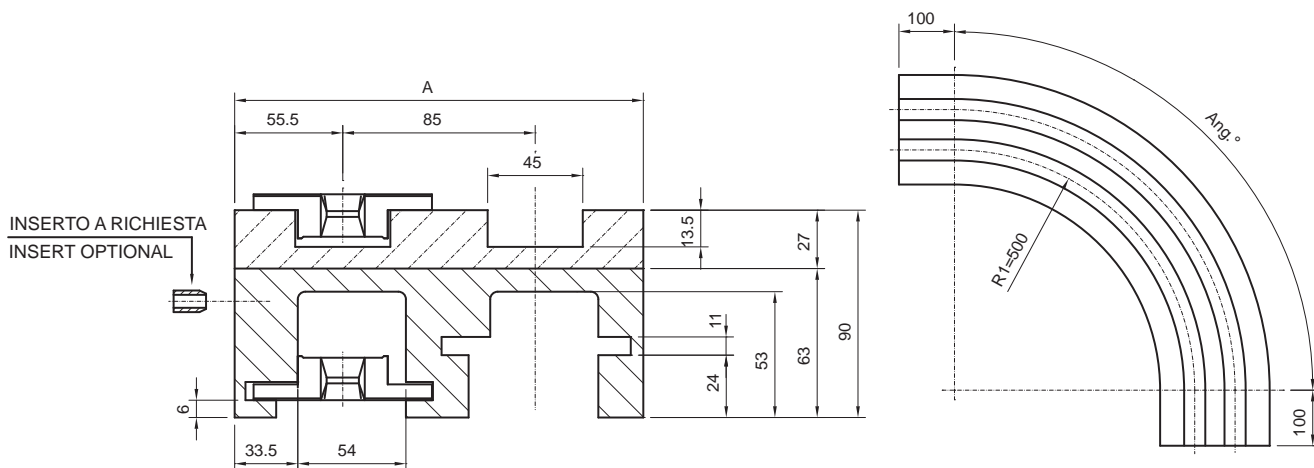
N° di vie superiori a richiesta - More than 6 tracks on request



**Rif. Catena  
Chains ref.**  
780 M K330

VERSIONE CMB07 / VERSION CMB07							
N° VIE Nr. of TRACKS	A	Angolo curva / Curve angle					
		15°	30°	45°	60°	75°	90°
1	100	CMB07 01 15	CMB07 01 30	CMB07 01 45	CMB07 01 60	CMB07 01 75	CMB07 01 90
2	185	CMB07 02 15	CMB07 02 30	CMB07 02 45	CMB07 02 60	CMB07 02 75	CMB07 02 90
3	270	CMB07 03 15	CMB07 03 30	CMB07 03 45	CMB07 03 60	CMB07 03 75	CMB07 03 90
4	355	CMB07 04 15	CMB07 04 30	CMB07 04 45	CMB07 04 60	CMB07 04 75	CMB07 04 90
5	440	CMB07 05 15	CMB07 05 30	CMB07 05 45	CMB07 05 60	CMB07 05 75	CMB07 05 90
6	525	CMB07 06 15	CMB07 06 30	CMB07 06 45	CMB07 06 60	CMB07 06 75	CMB07 06 90
7	610	CMB07 07 15	CMB07 07 30	CMB07 07 45	CMB07 07 60	CMB07 07 75	CMB07 07 90
8	695	CMB07 08 15	CMB07 08 30	CMB07 08 45	CMB07 08 60	CMB07 08 75	CMB07 08 90

N° di vie superiori a richiesta - More than 8 tracks on request



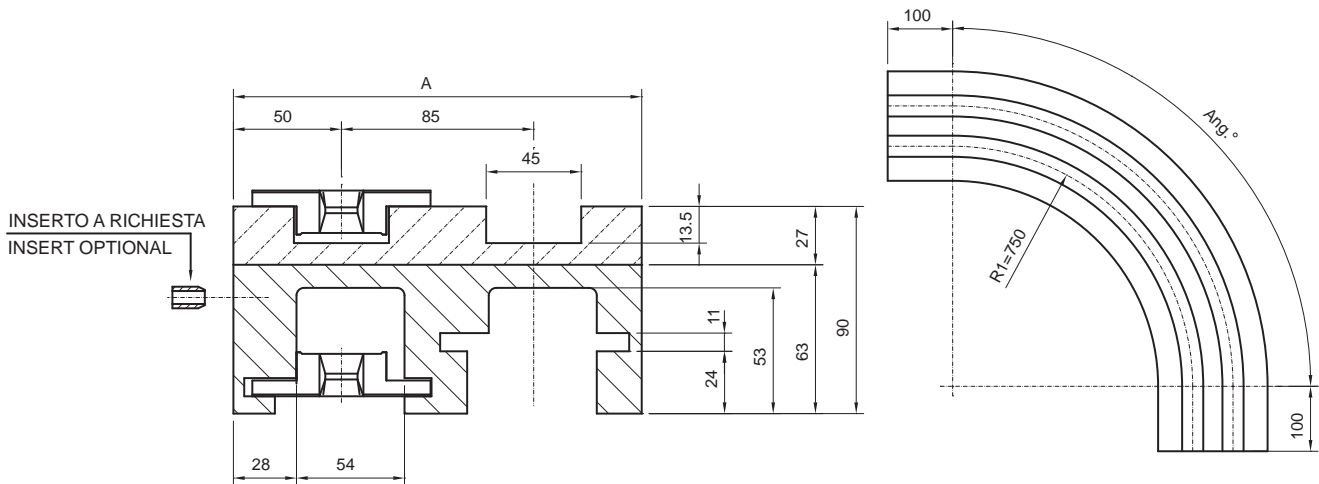
**Rif. Catena  
Chains ref.**  
780 M K330

VERSIONE CMB04 / VERSION CMB04							
N° VIE Nr. of TRACKS	A	Angolo curva / Curve angle					
		15°	30°	45°	60°	75°	90°
1	111	CMB04 01 15	CMB04 01 30	CMB04 01 45	CMB04 01 60	CMB04 01 75	CMB04 01 90
2	196	CMB04 02 15	CMB04 02 30	CMB04 02 45	CMB04 02 60	CMB04 02 75	CMB04 02 90
3	281	CMB04 03 15	CMB04 03 30	CMB04 03 45	CMB04 03 60	CMB04 03 75	CMB04 03 90
4	366	CMB04 04 15	CMB04 04 30	CMB04 04 45	CMB04 04 60	CMB04 04 75	CMB04 04 90
5	451	CMB04 05 15	CMB04 05 30	CMB04 05 45	CMB04 05 60	CMB04 05 75	CMB04 05 90
6	536	CMB04 06 15	CMB04 06 30	CMB04 06 45	CMB04 06 60	CMB04 06 75	CMB04 06 90
7	621	CMB04 07 15	CMB04 07 30	CMB04 07 45	CMB04 07 60	CMB04 07 75	CMB04 07 90
8	706	CMB04 08 15	CMB04 08 30	CMB04 08 45	CMB04 08 60	CMB04 08 75	CMB04 08 90

N° di vie superiori a richiesta - More than 8 tracks on request



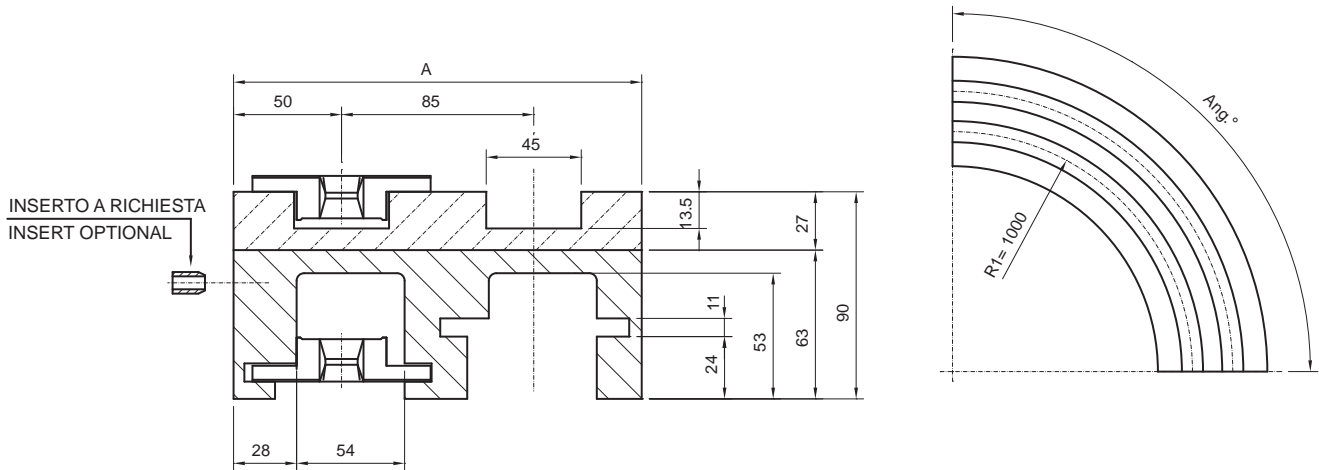
# GUIDE CURVE PER SISTEMI MAGNETICI MAGNETIC CORNER TRACKS



VERSIONE CMB08 / VERSION CMB08							
N° VIE Nr. of TRACKS	A	Angolo curva / Curve angle					
		15°	30°	45°	60°	75°	90°
1	100	CMB08 01 15	CMB08 01 30	CMB08 01 45	CMB08 01 60	CMB08 01 75	CMB08 01 90
2	185	CMB08 02 15	CMB08 02 30	CMB08 02 45	CMB08 02 60	CMB08 02 75	CMB08 02 90
3	270	CMB08 03 15	CMB08 03 30	CMB08 03 45	CMB08 03 60	CMB08 03 75	CMB08 03 90
4	355	CMB08 04 15	CMB08 04 30	CMB08 04 45	CMB08 04 60	CMB08 04 75	CMB08 04 90
5	440	CMB08 05 15	CMB08 05 30	CMB08 05 45	CMB08 05 60	CMB08 05 75	CMB08 05 90
6	525	CMB08 06 15	CMB08 06 30	CMB08 06 45	CMB08 06 60	CMB08 06 75	CMB08 06 90
7	610	CMB08 07 15	CMB08 07 30	CMB08 07 45	CMB08 07 60	CMB08 07 75	CMB08 07 90
8	695	CMB08 08 15	CMB08 08 30	CMB08 08 45	CMB08 08 60	CMB08 08 75	CMB08 08 90

Rif. Catena  
Chains ref.  
780 M K330

N° di vie superiori a richiesta - More than 8 tracks on request

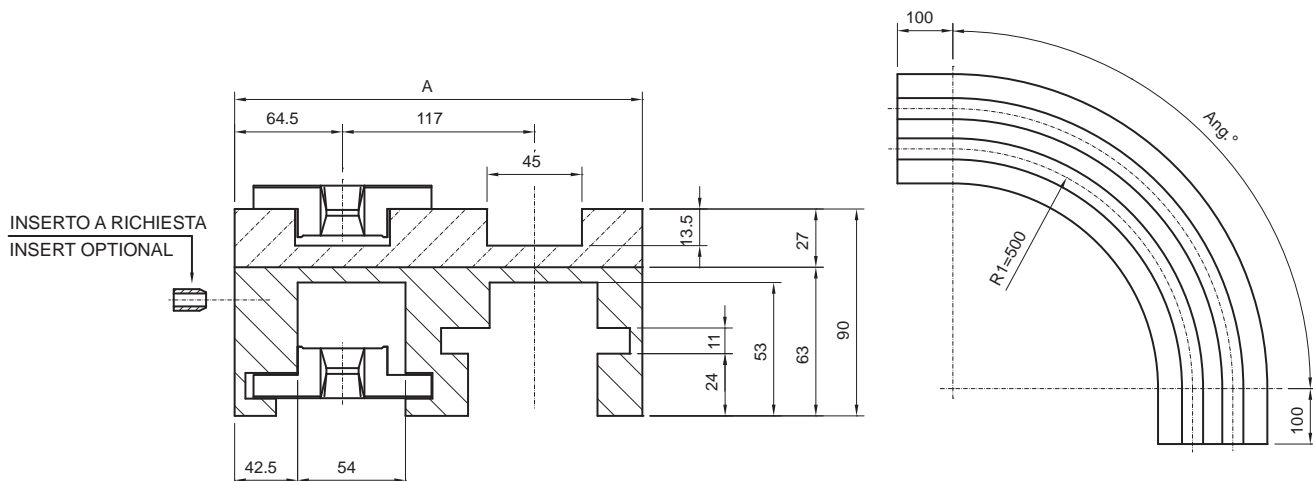


VERSIONE CMB05D / VERSION CMB05D							
N° VIE Nr. of TRACKS	A	Angolo curva / Curve angle					
		15°	30°	45°	60°	75°	90°
1	100	CMB05D 01 15	CMB05D 01 30	CMB05D 01 45	CMB05D 01 60	CMB05D 01 75	CMB05D 01 90
2	185	CMB05D 02 15	CMB05D 02 30	CMB05D 02 45	CMB05D 02 60	CMB05D 02 75	CMB05D 02 90
3	270	CMB05D 03 15	CMB05D 03 30	CMB05D 03 45	CMB05D 03 60	CMB05D 03 75	CMB05D 03 90
4	355	CMB05D 04 15	CMB05D 04 30	CMB05D 04 45	CMB05D 04 60	CMB05D 04 75	CMB05D 04 90
5	440	CMB05D 05 15	CMB05D 05 30	CMB05D 05 45	CMB05D 05 60	CMB05D 05 75	CMB05D 05 90
6	525	CMB05D 06 15	CMB05D 06 30	CMB05D 06 45	CMB05D 06 60	CMB05D 06 75	CMB05D 06 90
7	610	CMB05D 07 15	CMB05D 07 30	CMB05D 07 45	CMB05D 07 60	CMB05D 07 75	CMB05D 07 90
8	695	CMB05D 08 15	CMB05D 08 30	CMB05D 08 45	CMB05D 08 60	CMB05D 08 75	CMB05D 08 90

Rif. Catena  
Chains ref.  
780 M K330

N° di vie superiori a richiesta - More than 8 tracks on request

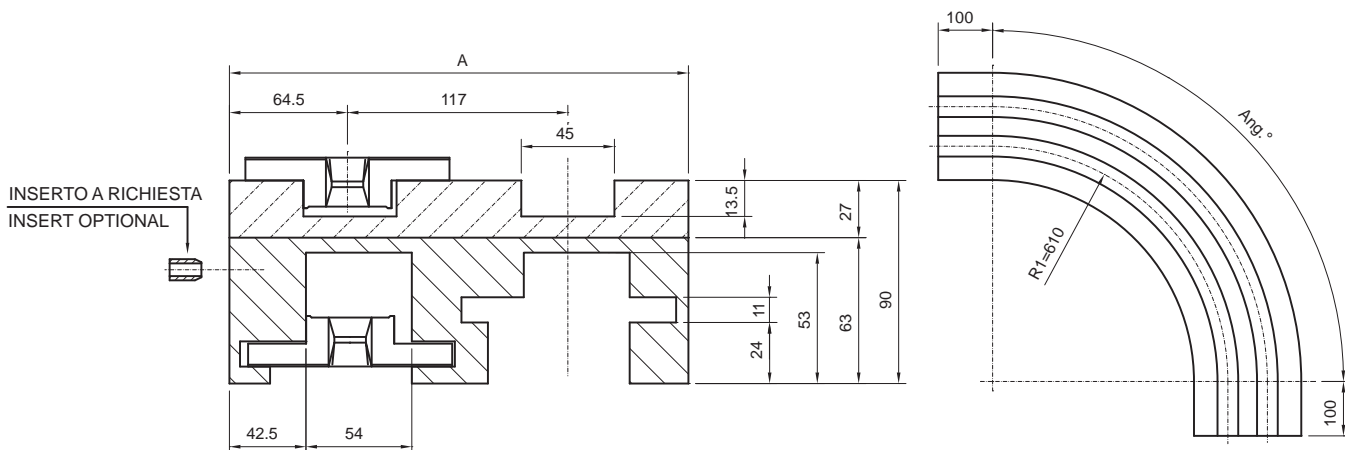
# GUIDE CURVE PER SISTEMI MAGNETICI MAGNETIC CORNER TRACKS



**Rif. Catena  
Chains ref.**  
780 M K450

VERSIONE CMB22 / VERSION CMB22							
N° VIE Nr. of TRACKS	A	Angolo curva / Curve angle					
		15°	30°	45°	60°	75°	90°
1	129	CMB22 01 15	CMB22 01 30	CMB22 01 45	CMB22 01 60	CMB22 01 75	CMB22 01 90
2	246	CMB22 02 15	CMB22 02 30	CMB22 02 45	CMB22 02 60	CMB22 02 75	CMB22 02 90
3	363	CMB22 03 15	CMB22 03 30	CMB22 03 45	CMB22 03 60	CMB22 03 75	CMB22 03 90
4	480	CMB22 04 15	CMB22 04 30	CMB22 04 45	CMB22 04 60	CMB22 04 75	CMB22 04 90

N° di vie superiori a richiesta - More than 4 tracks on request



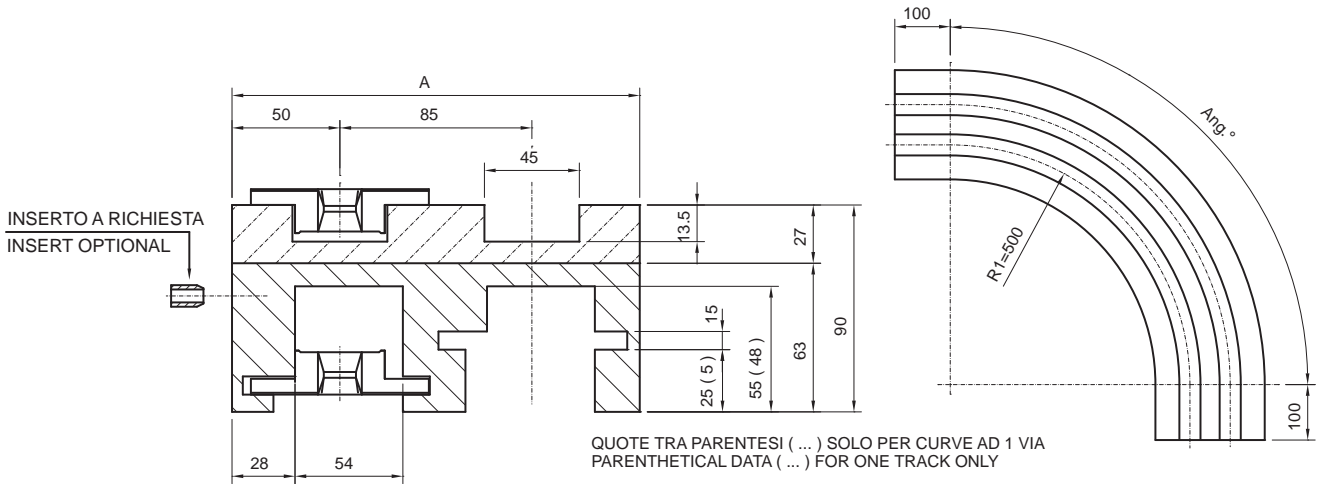
**Rif. Catena  
Chains ref.**  
780 M K 450

VERSIONE CMB27 / VERSION CMB27							
N° VIE Nr. of TRACKS	A	Angolo curva / Curve angle					
		15°	30°	45°	60°	75°	90°
1	129	CMB27 01 15	CMB27 01 30	CMB27 01 45	CMB27 01 60	CMB27 01 75	CMB27 01 90
2	246	CMB27 02 15	CMB27 02 30	CMB27 02 45	CMB27 02 60	CMB27 02 75	CMB27 02 90
3	363	CMB27 03 15	CMB27 03 30	CMB27 03 45	CMB27 03 60	CMB27 03 75	CMB27 03 90
4	480	CMB27 04 15	CMB27 04 30	CMB27 04 45	CMB27 04 60	CMB27 04 75	CMB27 04 90

N° di vie superiori a richiesta - More than 4 tracks on request



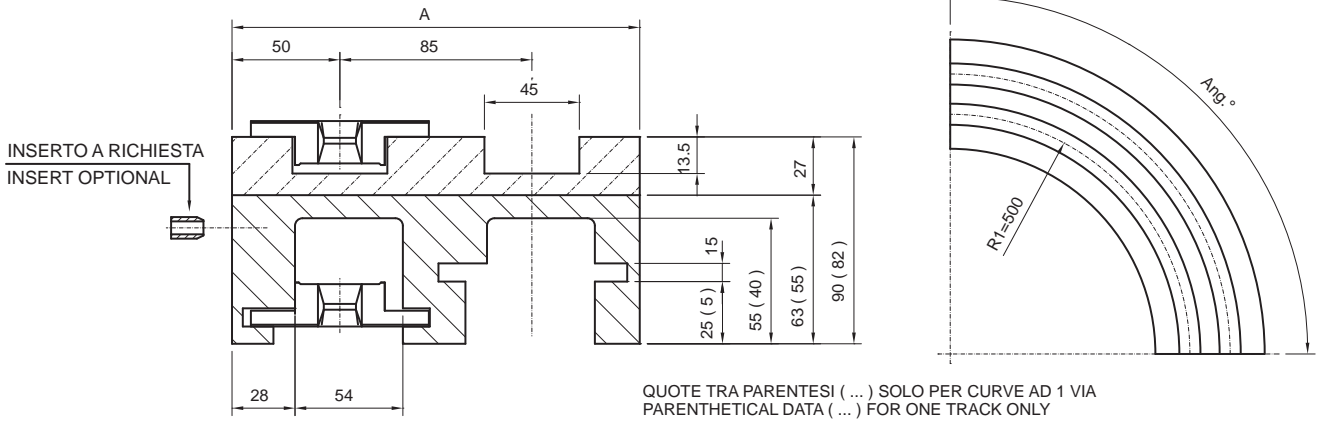
# GUIDE CURVE PER SISTEMI MAGNETICI MAGNETIC CORNER TRACKS



VERSIONE CMC06 / VERSION CMC06							
N° VIE Nr. of TRACKS	A	Angolo curva / Curve angle					
		15°	30°	45°	60°	75°	90°
1	100	CMC06 01 15	CMC06 01 30	CMC06 01 45	CMC06 01 60	CMC06 01 75	CMC06 01 90
2	185	CMC06 02 15	CMC06 02 30	CMC06 02 45	CMC06 02 60	CMC06 02 75	CMC06 02 90
3	270	CMC06 03 15	CMC06 03 30	CMC06 03 45	CMC06 03 60	CMC06 03 75	CMC06 03 90
4	355	CMC06 04 15	CMC06 04 30	CMC06 04 45	CMC06 04 60	CMC06 04 75	CMC06 04 90
5	440	CMC06 05 15	CMC06 05 30	CMC06 05 45	CMC06 05 60	CMC06 05 75	CMC06 05 90
6	525	CMC06 06 15	CMC06 06 30	CMC06 06 45	CMC06 06 60	CMC06 06 75	CMC06 06 90
7	610	CMC06 07 15	CMC06 07 30	CMC06 07 45	CMC06 07 60	CMC06 07 75	CMC06 07 90
8	695	CMC06 08 15	CMC06 08 30	CMC06 08 45	CMC06 08 60	CMC06 08 75	CMC06 08 90

Rif. Catena  
Chains ref.  
790 M K330

N° di vie superiori a richiesta - More than 8 tracks on request

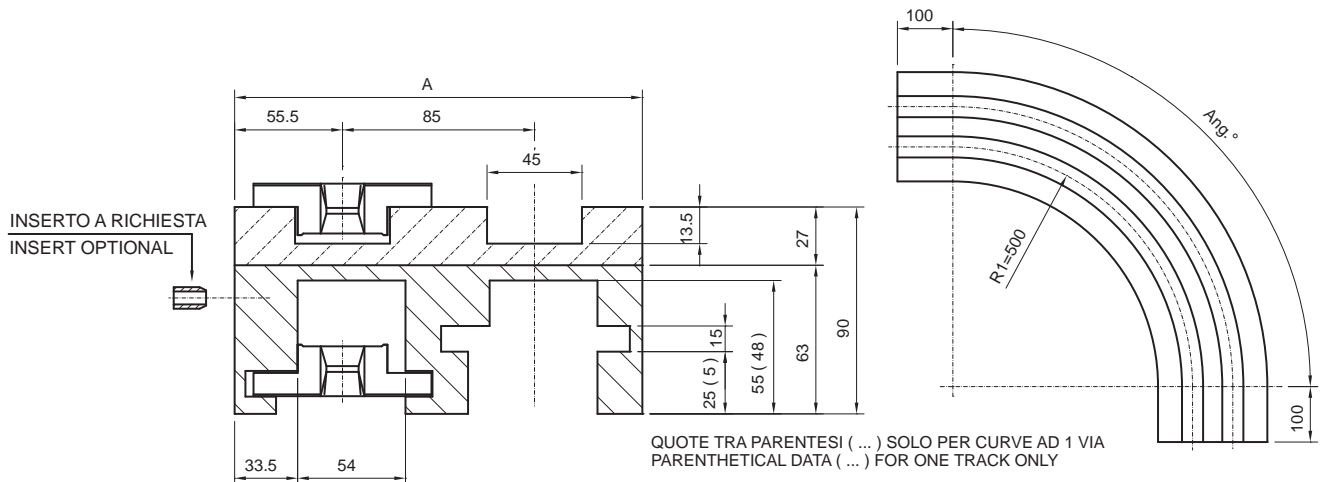


VERSIONE CMC07 / VERSION CMC07							
N° VIE Nr. of TRACKS	A	Angolo curva / Curve angle					
		15°	30°	45°	60°	75°	90°
1	100	CMC07 01 15	CMC07 01 30	CMC07 01 45	CMC07 01 60	CMC07 01 75	CMC07 01 90
2	185	CMC07 02 15	CMC07 02 30	CMC07 02 45	CMC07 02 60	CMC07 02 75	CMC07 02 90
3	270	CMC07 03 15	CMC07 03 30	CMC07 03 45	CMC07 03 60	CMC07 03 75	CMC07 03 90
4	355	CMC07 04 15	CMC07 04 30	CMC07 04 45	CMC07 04 60	CMC07 04 75	CMC07 04 90
5	440	CMC07 05 15	CMC07 05 30	CMC07 05 45	CMC07 05 60	CMC07 05 75	CMC07 05 90
6	525	CMC07 06 15	CMC07 06 30	CMC07 06 45	CMC07 06 60	CMC07 06 75	CMC07 06 90
7	610	CMC07 07 15	CMC07 07 30	CMC07 07 45	CMC07 07 60	CMC07 07 75	CMC07 07 90
8	695	CMC07 08 15	CMC07 08 30	CMC07 08 45	CMC07 08 60	CMC07 08 75	CMC07 08 90

Rif. Catena  
Chains ref.  
790 M K330

N° di vie superiori a richiesta - More than 8 tracks on request

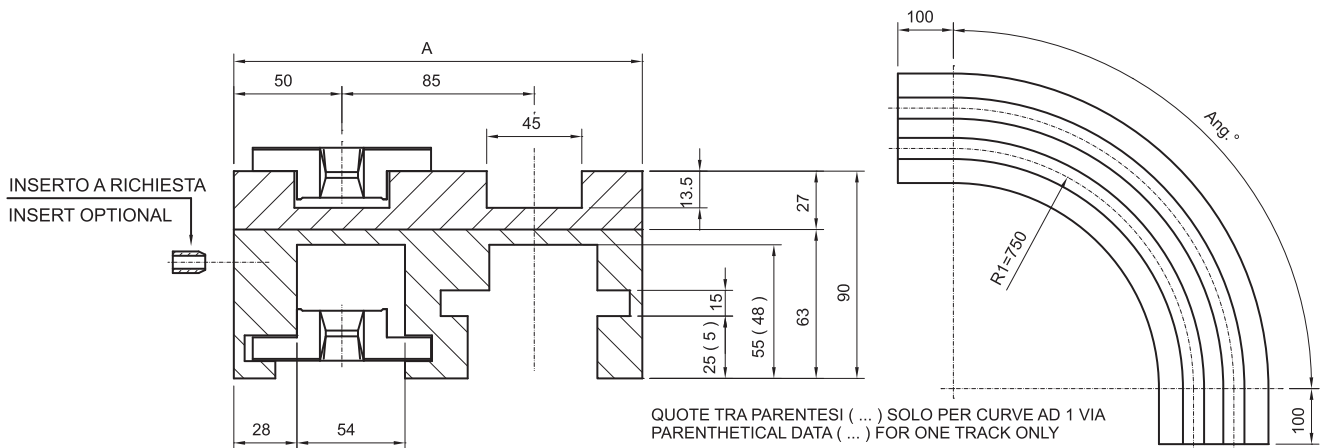
# GUIDE CURVE PER SISTEMI MAGNETICI MAGNETIC CORNER TRACKS



**Rif. Catena  
Chains ref.**  
790 M K330

VERSIONE CMC04 / VERSION CMC04							
N° VIE Nr. of TRACKS	A	Angolo curva / Curve angle					
		15°	30°	45°	60°	75°	90°
1	111	CMC04 01 15	CMC04 01 30	CMC04 01 45	CMC04 01 60	CMC04 01 75	CMC04 01 90
2	196	CMC04 02 15	CMC04 02 30	CMC04 02 45	CMC04 02 60	CMC04 02 75	CMC04 02 90
3	281	CMC04 03 15	CMC04 03 30	CMC04 03 45	CMC04 03 60	CMC04 03 75	CMC04 03 90
4	366	CMC04 04 15	CMC04 04 30	CMC04 04 45	CMC04 04 60	CMC04 04 75	CMC04 04 90
5	451	CMC04 05 15	CMC04 05 30	CMC04 05 45	CMC04 05 60	CMC04 05 75	CMC04 05 90
6	536	CMC04 06 15	CMC04 06 30	CMC04 06 45	CMC04 06 60	CMC04 06 75	CMC04 06 90
7	621	CMC04 07 15	CMC04 07 30	CMC04 07 45	CMC04 07 60	CMC04 07 75	CMC04 07 90
8	706	CMC04 08 15	CMC04 08 30	CMC04 08 45	CMC04 08 60	CMC04 08 75	CMC04 08 90

N° di vie superiori a richiesta - More than 8 tracks on request



**Rif. Catena  
Chains ref.**  
790 M K330

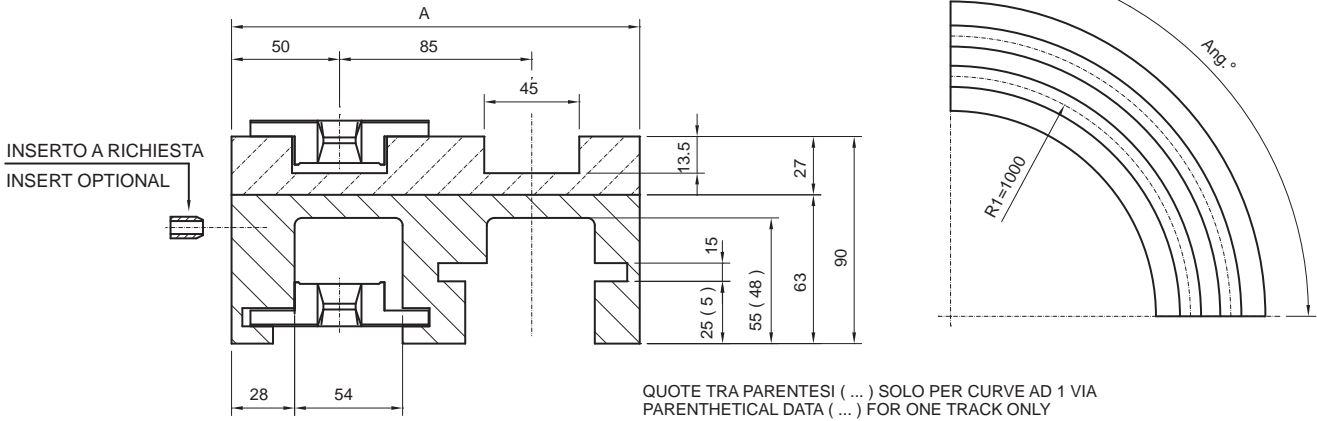
VERSIONE CMC08 / VERSION CMC08							
N° VIE Nr. of TRACKS	A	Angolo curva / Curve angle					
		15°	30°	45°	60°	75°	90°
1	100	CMC08 01 15	CMC08 01 30	CMC08 01 45	CMC08 01 60	CMC08 01 75	CMC08 01 90
2	185	CMC08 02 15	CMC08 02 30	CMC08 02 45	CMC08 02 60	CMC08 02 75	CMC08 02 90
3	270	CMC08 03 15	CMC08 03 30	CMC08 03 45	CMC08 03 60	CMC08 03 75	CMC08 03 90
4	355	CMC08 04 15	CMC08 04 30	CMC08 04 45	CMC08 04 60	CMC08 04 75	CMC08 04 90
5	440	CMC08 05 15	CMC08 05 30	CMC08 05 45	CMC08 05 60	CMC08 05 75	CMC08 05 90
6	525	CMC08 06 15	CMC08 06 30	CMC08 06 45	CMC08 06 60	CMC08 06 75	CMC08 06 90
7	610	CMC08 07 15	CMC08 07 30	CMC08 07 45	CMC08 07 60	CMC08 07 75	CMC08 07 90
8	695	CMC08 08 15	CMC08 08 30	CMC08 08 45	CMC08 08 60	CMC08 08 75	CMC08 08 90

N° di vie superiori a richiesta - More than 8 tracks on request





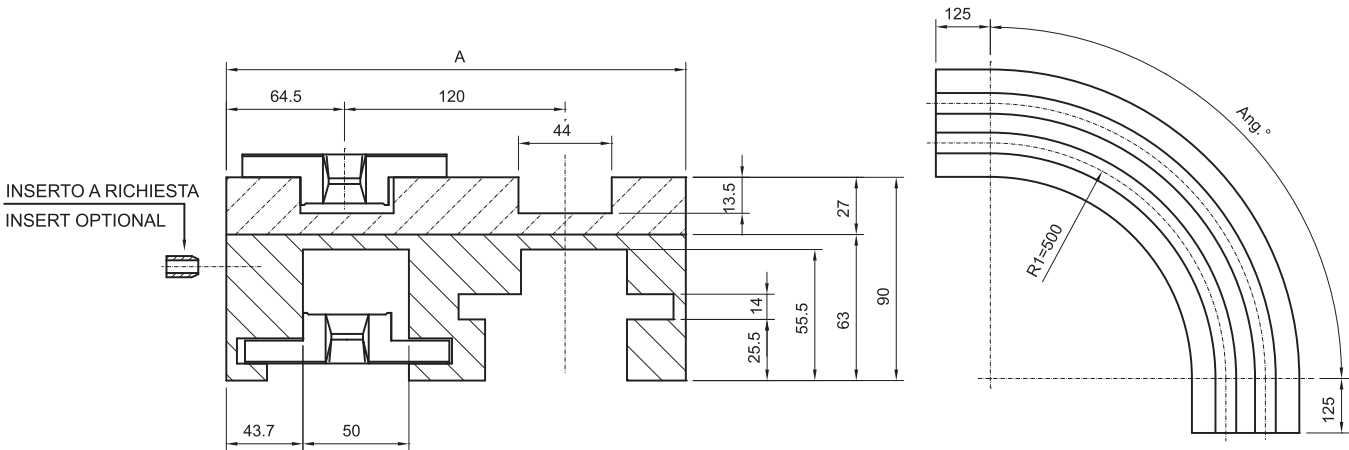
# GUIDE CURVE PER SISTEMI MAGNETICI MAGNETIC CORNER TRACKS



VERSIONE CMC05D / VERSION CMC05D							
N° VIE Nr. of TRACKS	A	Angolo curva / Curve angle					
		15°	30°	45°	60°	75°	90°
1	100	CMC05D 01 15	CMC05D 01 30	CMC05D 01 45	CMC05D 01 60	CMC05D 01 75	CMC05D 01 90
2	185	CMC05D 02 15	CMC05D 02 30	CMC05D 02 45	CMC05D 02 60	CMC05D 02 75	CMC05D 02 90
3	270	CMC05D 03 15	CMC05D 03 30	CMC05D 03 45	CMC05D 03 60	CMC05D 03 75	CMC05D 03 90
4	355	CMC05D 04 15	CMC05D 04 30	CMC05D 04 45	CMC05D 04 60	CMC05D 04 75	CMC05D 04 90
5	440	CMC05D 05 15	CMC05D 05 30	CMC05D 05 45	CMC05D 05 60	CMC05D 05 75	CMC05D 05 90
6	525	CMC05D 06 15	CMC05D 06 30	CMC05D 06 45	CMC05D 06 60	CMC05D 06 75	CMC05D 06 90
7	610	CMC05D 07 15	CMC05D 07 30	CMC05D 07 45	CMC05D 07 60	CMC05D 07 75	CMC05D 07 90
8	695	CMC05D 08 15	CMC05D 08 30	CMC05D 08 45	CMC05D 08 60	CMC05D 08 75	CMC05D 08 90

Rif. Catena  
Chains ref.  
790 M K330

N° di vie superiori a richiesta - More than 8 tracks on request

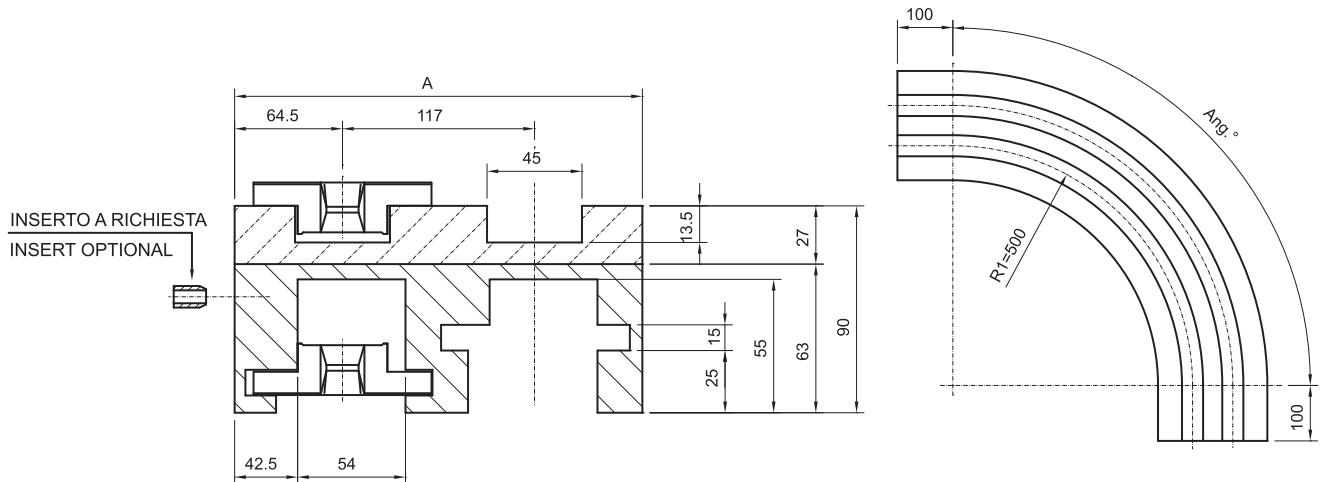


VERSIONE CMC21 / VERSION CMC21							
N° VIE Nr. of TRACKS	A	Angolo curva / Curve angle					
		15°	30°	45°	60°	75°	90°
1	129	CMC21 01 15	CMC21 01 30	CMC21 01 45	CMC21 01 60	CMC21 01 75	CMC21 01 90
2	249	CMC21 02 15	CMC21 02 30	CMC21 02 45	CMC21 02 60	CMC21 02 75	CMC21 02 90
3	369	CMC21 03 15	CMC21 03 30	CMC21 03 45	CMC21 03 60	CMC21 03 75	CMC21 03 90
4	489	CMC21 04 15	CMC21 04 30	CMC21 04 45	CMC21 04 60	CMC21 04 75	CMC21 04 90

Rif. Catena  
Chains ref.  
790 M K 450

N° di vie superiori a richiesta - More than 4 tracks on request

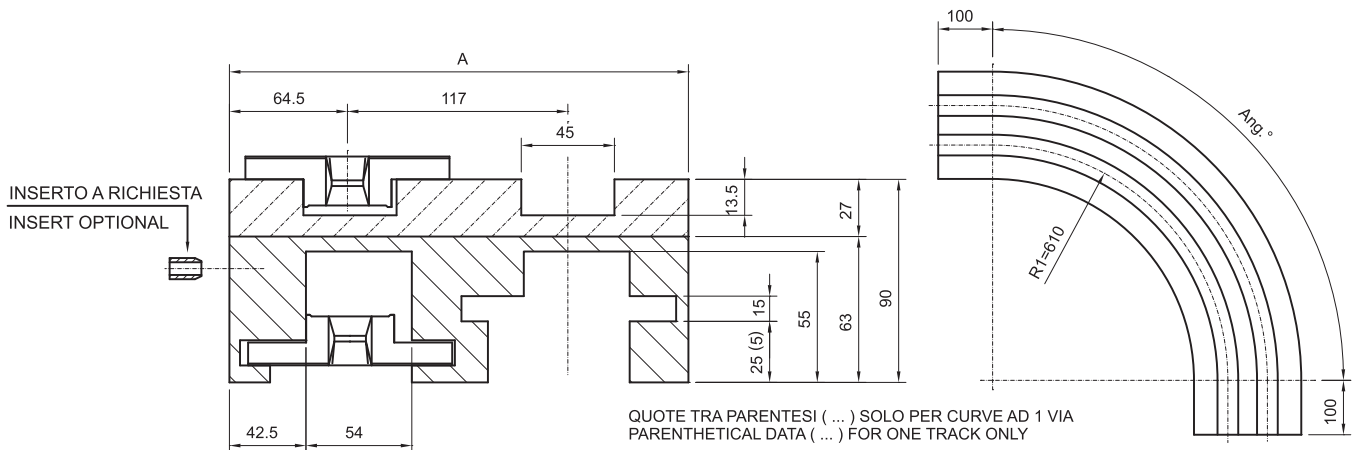
# GUIDE CURVE PER SISTEMI MAGNETICI MAGNETIC CORNER TRACKS



**Rif. Catena  
Chains ref.**  
790 M K450

VERSIONE CMC22 / VERSION CMC22							
N° VIE Nr. of TRACKS	A	Angolo curva / Curve angle					
		15°	30°	45°	60°	75°	90°
1	129	CMC22 01 15	CMC22 01 30	CMC22 01 45	CMC22 01 60	CMC22 01 75	CMC22 01 90
2	246	CMC22 02 15	CMC22 02 30	CMC22 02 45	CMC22 02 60	CMC22 02 75	CMC22 02 90
3	363	CMC22 03 15	CMC22 03 30	CMC22 03 45	CMC22 03 60	CMC22 03 75	CMC22 03 90
4	480	CMC22 04 15	CMC22 04 30	CMC22 04 45	CMC22 04 60	CMC22 04 75	CMC22 04 90

N° di vie superiori a richiesta - *More than 4 tracks on request*

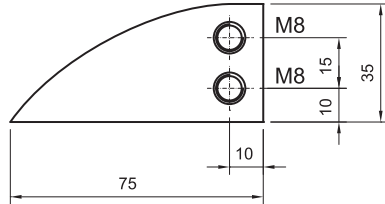


QUOTE TRA PARENTESI ( ... ) SOLO PER CURVE AD 1 VIA  
PARENTHEICAL DATA ( ... ) FOR ONE TRACK ONLY

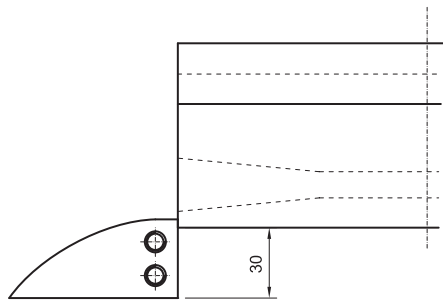
**Rif. Catena  
Chains ref.**  
790 M K 450

VERSIONE CMC27 / VERSION CMC27							
N° VIE Nr. of TRACKS	A	Angolo curva / Curve angle					
		15°	30°	45°	60°	75°	90°
1	129	CMC27 01 15	CMC27 01 30	CMC27 01 45	CMC27 01 60	CMC27 01 75	CMC27 01 90
2	246	CMC27 02 15	CMC27 02 30	CMC27 02 45	CMC27 02 60	CMC27 02 75	CMC27 02 90
3	363	CMC27 03 15	CMC27 03 30	CMC27 03 45	CMC27 03 60	CMC27 03 75	CMC27 03 90
4	480	CMC27 04 15	CMC27 04 30	CMC27 04 45	CMC27 04 60	CMC27 04 75	CMC27 04 90

N° di vie superiori a richiesta - *More than 4 tracks on request*

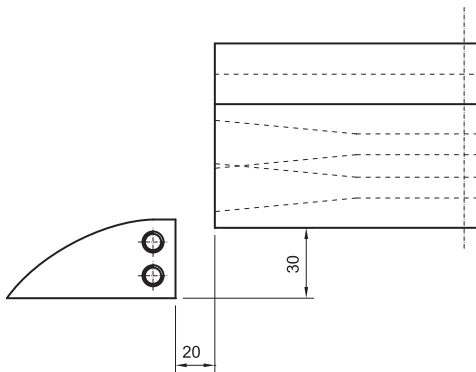


Inserti M8 standard, M10 a richiesta.  
*M8 brass insert, M10 on request.*



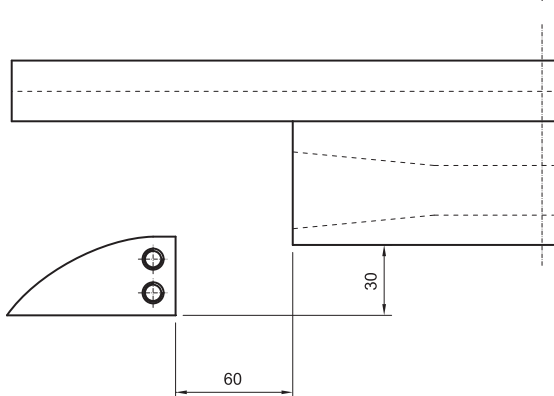
Posizione del pattino per curve  
con canali di ritorno aventi lo stesso livello.

*Return guide shoe for curve  
with return part at same level.*



Posizione del pattino per curve  
con canali di ritorno a canali disassati.

*Return guide shoe for curve  
with staggered return part.*



Posizione del pattino per curve  
serie CM6 - CMC6 - CMC21  
(catene 780 M e 790 M).

*Return guide shoe for curve  
CM6 - CMC6 - CMC21 series  
(780 M - 790 M chains series).*



**CONST****R****UKTOR**<sup>TM</sup>

[www.construktor.com](http://www.construktor.com)

[info@onstruktor.com](mailto:info@onstruktor.com)

**Poznań**

tel. +48 61 653 25 60  
tel. +48 61 653 25 61  
[poznan@onstruktor.com](mailto:poznan@onstruktor.com)

**Wrocław**

tel.+ 48 71 799 88 69  
tel. +48 71 788 88 79  
[wroclaw@onstruktor.com](mailto:wroclaw@onstruktor.com)

